

Product datasheet for **TA333873**

SLC5A4 Rabbit Polyclonal Antibody

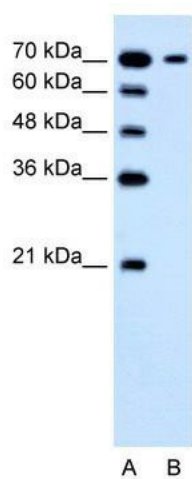
Product data:

Product Type:	Primary Antibodies
Applications:	WB
Recommended Dilution:	WB
Reactivity:	Human
Host:	Rabbit
Isotype:	IgG
Clonality:	Polyclonal
Immunogen:	The immunogen for Anti-SLC5A4 Antibody: synthetic peptide directed towards the N terminal of human SLC5A4. Synthetic peptide located within the following region: MASTVSPSTIAETPEPPPLSDHIRNAADISVIVYFLVVMVAVGLWAMLKT
Formulation:	Liquid. Purified antibody supplied in 1x PBS buffer with 0.09% (w/v) sodium azide and 2% sucrose. <i>Note that this product is shipped as lyophilized powder to China customers.</i>
Purification:	Affinity Purified
Conjugation:	Unconjugated
Storage:	Store at -20°C as received.
Stability:	Stable for 12 months from date of receipt.
Predicted Protein Size:	72 kDa
Gene Name:	solute carrier family 5 member 4
Database Link:	NP_055042 Entrez Gene 6527 Human Q9NY91
Background:	SLC5A4 belongs to the sodium:solute symporter family and is a sodium-dependent glucose transporter.
Synonyms:	DJ90G24.4; SAAT1; SGLT3
Note:	Immunogen sequence homology: Human: 100%
Protein Families:	Transmembrane



[View online »](#)

Product images:



WB Suggested Anti-SLC5A4 Antibody Titration:
1.25 ug/ml; Positive Control: Jurkat cell lysate