

Product datasheet for **TA333870**

xCT (SLC7A11) Rabbit Polyclonal Antibody

Product data:

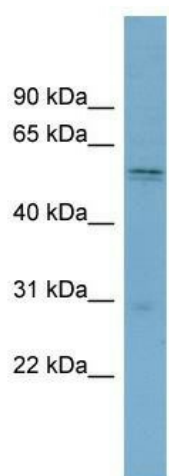
Product Type:	Primary Antibodies
Applications:	WB
Recommended Dilution:	WB
Reactivity:	Human
Host:	Rabbit
Isotype:	IgG
Clonality:	Polyclonal
Immunogen:	The immunogen for Anti-SLC7A11 Antibody: synthetic peptide directed towards the middle region of human SLC7A11. Synthetic peptide located within the following region: KGQTQNFKDAFSGRDSSITRLPLAFYYGMYAYAGWFYLNLFVTEEEVENPEK
Formulation:	Liquid. Purified antibody supplied in 1x PBS buffer with 0.09% (w/v) sodium azide and 2% sucrose. <i>Note that this product is shipped as lyophilized powder to China customers.</i>
Purification:	Affinity Purified
Conjugation:	Unconjugated
Storage:	Store at -20°C as received.
Stability:	Stable for 12 months from date of receipt.
Predicted Protein Size:	55 kDa
Gene Name:	solute carrier family 7 member 11
Database Link:	NP_055146 Entrez Gene 23657 Human Q9UPY5
Background:	SLC7A11 is a member of a heteromeric Na(+)-independent anionic amino acid transport system highly specific for cystine and glutamate. In this system, designated system Xc(-), the anionic form of cystine is transported in exchange for glutamate.
Synonyms:	CCBR1; xCT
Note:	Immunogen sequence homology: Human: 100%; Dog: 92%; Pig: 92%; Horse: 92%; Sheep: 92%; Bovine: 92%; Rabbit: 92%; Guinea pig: 92%; Rat: 85%; Mouse: 85%



[View online »](#)

Protein Families: Druggable Genome, Transmembrane

Product images:



WB Suggested Anti-SLC7A11 Antibody Titration:
0.2-1 ug/ml; ELISA Titer: 1:312500; Positive
Control: THP-1 cell lysate