

## Product datasheet for **TA333868**

### SLC39A2 Rabbit Polyclonal Antibody

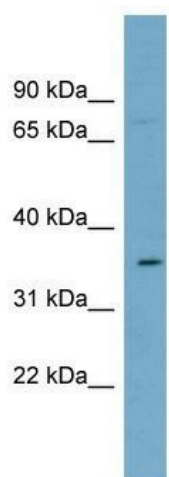
#### Product data:

Product Type:	Primary Antibodies
Applications:	WB
Recommended Dilution:	WB
Reactivity:	Human
Host:	Rabbit
Isotype:	IgG
Clonality:	Polyclonal
Immunogen:	The immunogen for Anti-SLC39A2 Antibody: synthetic peptide directed towards the N terminal of human SLC39A2. Synthetic peptide located within the following region: EIESQIQKFMVQNRSASERNSSGDADSAHMEYPYGELIISLGFFVFFLE
Formulation:	Liquid. Purified antibody supplied in 1x PBS buffer with 0.09% (w/v) sodium azide and 2% sucrose.
Purification:	Affinity Purified
Conjugation:	Unconjugated
Storage:	Store at -20°C as received.
Stability:	Stable for 12 months from date of receipt.
Predicted Protein Size:	33 kDa
Gene Name:	solute carrier family 39 member 2
Database Link:	<a href="#">NP_055394</a> <a href="#">Entrez Gene 29986 Human</a> <a href="#">Q9NP94</a>
Background:	This gene encodes a member of the ZIP family of metal ion transporters. The encoded protein functions as a zinc transporter. Mutations in this gene may be associated with susceptibility to carotid artery disease. Multiple transcript variants have been described. [provided by RefSeq, Mar 2010]
Synonyms:	6A1; ETI-1; ZIP-2; ZIP2
Note:	Immunogen sequence homology: Human: 100%


[View online »](#)

Protein Families: Transmembrane

### Product images:



WB Suggested Anti-SLC39A2 Antibody Titration:  
0.2-1 ug/ml; Positive Control: PANC1 cell lysate