

Product datasheet for **TA333867**

GLUT8 (SLC2A8) Rabbit Polyclonal Antibody

Product data:

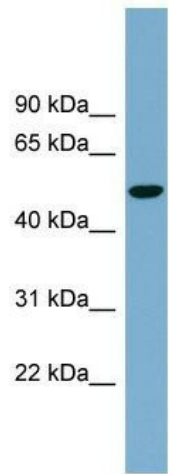
Product Type:	Primary Antibodies
Applications:	WB
Recommended Dilution:	WB
Reactivity:	Human
Host:	Rabbit
Isotype:	IgG
Clonality:	Polyclonal
Immunogen:	The immunogen for Anti-SLC2A8 Antibody: synthetic peptide directed towards the middle region of human SLC2A8. Synthetic peptide located within the following region: VLSGVMMVFSTSAFGAYFKLTQGGPGNSSHVSAISAPVSAQPVDASVGLAW
Formulation:	Liquid. Purified antibody supplied in 1x PBS buffer with 0.09% (w/v) sodium azide and 2% sucrose. <i>Note that this product is shipped as lyophilized powder to China customers.</i>
Purification:	Affinity Purified
Conjugation:	Unconjugated
Storage:	Store at -20°C as received.
Stability:	Stable for 12 months from date of receipt.
Predicted Protein Size:	51 kDa
Gene Name:	solute carrier family 2 member 8
Database Link:	NP_055395 Entrez Gene 29988 Human Q9NY64
Background:	SLC2A8 is the insulin-regulated facilitative glucose transporter. SLC2A8 binds cytochalasin B in a glucose-inhibitable manner. SLC2A8 seems to be a dual-specific sugar transporter as it is inhibitable by fructose.
Synonyms:	GLUT8; GLUTX1
Note:	Immunogen sequence homology: Human: 100%; Rabbit: 100%



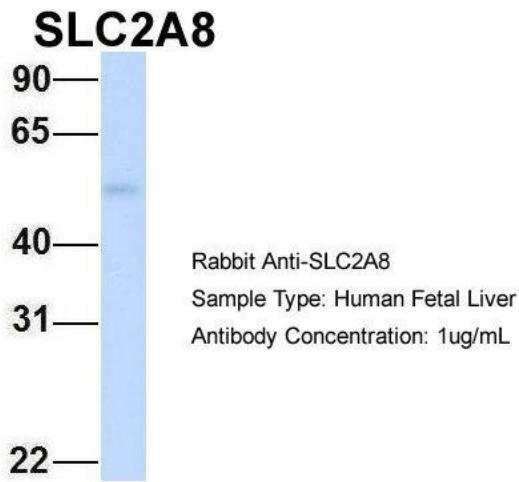
[View online »](#)

Protein Families: Transmembrane

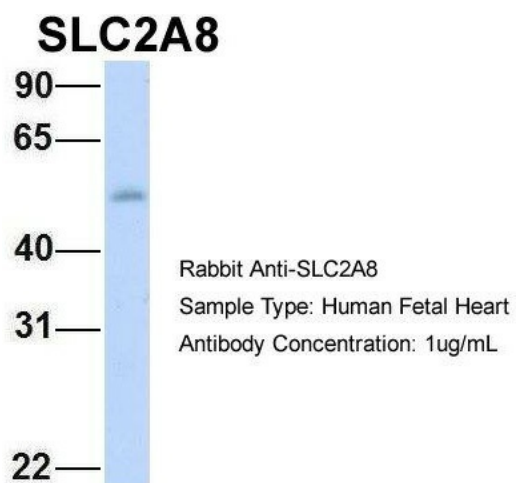
Product images:



WB Suggested Anti-SLC2A8 Antibody Titration: 0.2-1 ug/ml; Positive Control: NCI-H226 cell lysate



Host: Rabbit; Target Name: SLC2A8; Sample Tissue: Human Fetal Liver; Antibody Dilution: 1.0 ug/ml



Host: Rabbit; Target Name: SLC2A8; Sample
Tissue: Human Fetal Heart; Antibody Dilution: 1.0
ug/ml