

## Product datasheet for **TA333863**

### TINP1 (NSA2) Rabbit Polyclonal Antibody

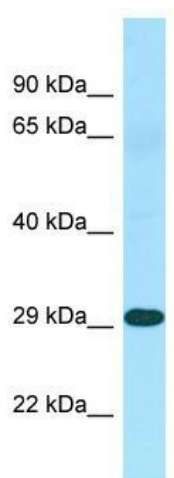
#### Product data:

Product Type:	Primary Antibodies
Applications:	WB
Recommended Dilution:	WB
Reactivity:	Human
Host:	Rabbit
Isotype:	IgG
Clonality:	Polyclonal
Immunogen:	The immunogen for Anti-NSA2 Antibody is: synthetic peptide directed towards the N-terminal region of Human NSA2. Synthetic peptide located within the following region: QNEYIELHRKRYGYRLDYHEKRRKKESREAHERSKKAKKMIGLKAKLYHK
Formulation:	Liquid. Purified antibody supplied in 1x PBS buffer with 0.09% (w/v) sodium azide and 2% sucrose. <i>Note that this product is shipped as lyophilized powder to China customers.</i>
Purification:	Affinity Purified
Conjugation:	Unconjugated
Storage:	Store at -20°C as received.
Stability:	Stable for 12 months from date of receipt.
Predicted Protein Size:	29 kDa
Gene Name:	NSA2, ribosome biogenesis homolog
Database Link:	<a href="#">NP_055701</a> <a href="#">Entrez Gene 10412 Human</a> <a href="#">O95478</a>
Background:	NSA2 is involved in the biogenesis of the 60S ribosomal subunit. It may play a part in the quality control of pre-60S particles.
Synonyms:	CDK105; HCL-G1; HCLG1; HUSSY-29; HUSSY29; TINP1
Note:	Immunogen sequence homology: Pig: 100%; Rat: 100%; Human: 100%; Rabbit: 100%; Guinea pig: 100%; Dog: 93%; Horse: 93%; Mouse: 93%; Bovine: 93%; Zebrafish: 86%



[View online »](#)

## Product images:



WB Suggested Anti-NSA2 Antibody; Titration: 1.0 ug/ml; Positive Control: Fetal Heart