

Product datasheet for **TA333861**

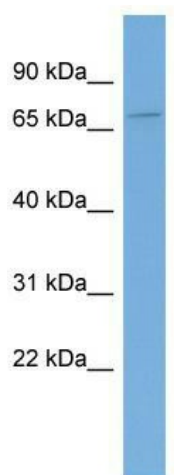
KHDC4 Rabbit Polyclonal Antibody

Product data:

Product Type:	Primary Antibodies
Applications:	WB
Recommended Dilution:	WB
Reactivity:	Human
Host:	Rabbit
Isotype:	IgG
Clonality:	Polyclonal
Immunogen:	The immunogen for Anti-KIAA0907 Antibody: synthetic peptide directed towards the middle region of human KIAA0907. Synthetic peptide located within the following region: ELPDERESGLLG YQHGIHMTNLGTGFSSQNEIEGAGSKPASSSGKERER
Formulation:	Liquid. Purified antibody supplied in 1x PBS buffer with 0.09% (w/v) sodium azide and 2% sucrose. <i>Note that this product is shipped as lyophilized powder to China customers.</i>
Purification:	Affinity Purified
Conjugation:	Unconjugated
Storage:	Store at -20°C as received.
Stability:	Stable for 12 months from date of receipt.
Predicted Protein Size:	65 kDa
Gene Name:	KIAA0907
Database Link:	NP_055764 Entrez Gene 22889 Human Q7Z7F0
Background:	The function of this protein remains unknown.
Synonyms:	BLOM7
Note:	Immunogen sequence homology: Pig: 100%; Rat: 100%; Horse: 100%; Human: 100%; Mouse: 100%; Rabbit: 100%; Guinea pig: 100%; Dog: 93%



[View online »](#)

Product images:

WB Suggested Anti-KIAA0907 Antibody Titration:
0.2-1 ug/ml; Positive Control: Human Spleen