

Product datasheet for **TA333859**

KIFAP3 Rabbit Polyclonal Antibody

Product data:

Product Type:	Primary Antibodies
Applications:	WB
Recommended Dilution:	WB
Reactivity:	Human
Host:	Rabbit
Isotype:	IgG
Clonality:	Polyclonal
Immunogen:	The immunogen for Anti-KIFAP3 Antibody: synthetic peptide directed towards the middle region of human KIFAP3. Synthetic peptide located within the following region: WLEMVESRQMDESEQYLYGDDRIEPIYIHEGDILERPDLFYNSDGLIASEG
Formulation:	Liquid. Purified antibody supplied in 1x PBS buffer with 0.09% (w/v) sodium azide and 2% sucrose.
Purification:	Affinity Purified
Conjugation:	Unconjugated
Storage:	Store at -20°C as received.
Stability:	Stable for 12 months from date of receipt.
Predicted Protein Size:	91 kDa
Gene Name:	kinesin associated protein 3
Database Link:	NP_055785 Entrez Gene 22920 Human Q92845



[View online »](#)

Background:

The small G protein GDP dissociation stimulator (smg GDS) is a regulator protein having two activities on a group of small G proteins including the Rho and Rap1 family members and Ki-Ras; one is to stimulate their GDP/GTP exchange reactions, and the other is to inhibit their interactions with membranes. The protein encoded by this gene contains 9 'Armadillo' repeats and interacts with the smg GDS protein through these repeats. This protein, which is highly concentrated around the endoplasmic reticulum, is phosphorylated by v-src, and this phosphorylation reduces the affinity of the protein for smg GDS. It is thought that this protein serves as a linker between human chromosome-associated polypeptide (HCAP) and KIF3A/B, a kinesin superfamily protein in the nucleus, and that it plays a role in the interaction of chromosomes with an ATPase motor protein.

Synonyms:

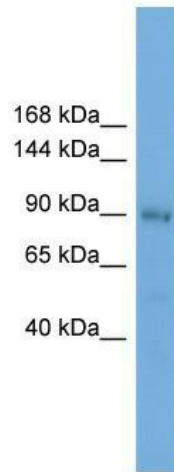
dj190i16.1; FLA3; KAP-1; KAP-3; KAP3; SMAP; Smg-GDS

Note:

Immunogen sequence homology: Pig: 100%; Rat: 100%; Horse: 100%; Human: 100%; Mouse: 100%; Bovine: 100%; Rabbit: 100%; Guinea pig: 100%; Dog: 93%

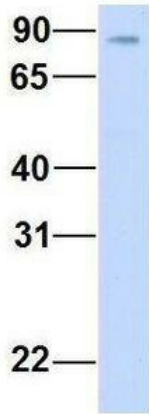
Protein Families:

Druggable Genome

Product images:

WB Suggested Anti-KIFAP3 Antibody Titration:
0.2-1 ug/ml; Positive Control: PANC1 cell lysate

KIFAP3



Rabbit Anti-KIFAP3
Sample Type: Human Fetal Brain
Antibody Concentration: 1ug/mL

Host: Rabbit; Target Name: KIFAP3; Sample
Tissue: Human Fetal Brain; Antibody Dilution: 1.0
ug/ml