

Product datasheet for **TA333855**

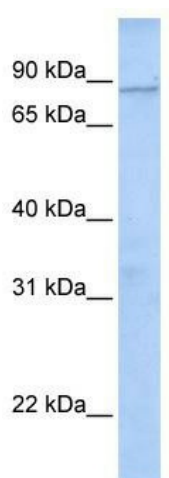
WDTC1 Rabbit Polyclonal Antibody

Product data:

Product Type:	Primary Antibodies
Applications:	WB
Recommended Dilution:	WB
Reactivity:	Human
Host:	Rabbit
Isotype:	IgG
Clonality:	Polyclonal
Immunogen:	The immunogen for Anti-WDTC1 Antibody: synthetic peptide directed towards the N terminal of human WDTC1. Synthetic peptide located within the following region: PMWPNTFWSAAEDGLIRQYDLRENSKHSEVLIDLTEYCGQLVEAKCLTVN
Formulation:	Liquid. Purified antibody supplied in 1x PBS buffer with 0.09% (w/v) sodium azide and 2% sucrose. <i>Note that this product is shipped as lyophilized powder to China customers.</i>
Purification:	Affinity Purified
Conjugation:	Unconjugated
Storage:	Store at -20°C as received.
Stability:	Stable for 12 months from date of receipt.
Predicted Protein Size:	76 kDa
Gene Name:	WD and tetratricopeptide repeats 1
Database Link:	NP_055838 Entrez Gene 23038 Human Q8N5D0
Background:	WDTC1 contains 2 TPR repeats and 7 WD repeats. WDTC1, the ortholog of Drosophila Adipose Gene, associates with human obesity, modulated by MUFA intake.
Synonyms:	ADP; DCAF9
Note:	Immunogen sequence homology: Dog: 100%; Pig: 100%; Rat: 100%; Horse: 100%; Human: 100%; Mouse: 100%; Rabbit: 100%; Guinea pig: 100%; Zebrafish: 79%



[View online »](#)

Product images:

WB Suggested Anti-WDTC1 Antibody Titration:
0.2-1 ug/ml; ELISA Titer: 1: 312500; Positive
Control: 721_B cell lysate
There is BioGPS gene
expression data showing that WDTC1 is
expressed in 721_B