

Product datasheet for **TA333853**

ENDOD1 Rabbit Polyclonal Antibody

Product data:

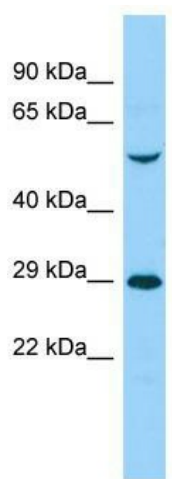
Product Type:	Primary Antibodies
Applications:	WB
Recommended Dilution:	WB
Reactivity:	Human
Host:	Rabbit
Isotype:	IgG
Clonality:	Polyclonal
Immunogen:	The immunogen for Anti-ENDOD1 Antibody is: synthetic peptide directed towards the C-terminal region of Human ENDOD1. Synthetic peptide located within the following region: DLQKLLPFNPQLFQNNCGETEQDTEKMKKILEVWNQIQDEERMVQSQKSS
Formulation:	Liquid. Purified antibody supplied in 1x PBS buffer with 0.09% (w/v) sodium azide and 2% sucrose. <i>Note that this product is shipped as lyophilized powder to China customers.</i>
Purification:	Affinity Purified
Conjugation:	Unconjugated
Storage:	Store at -20°C as received.
Stability:	Stable for 12 months from date of receipt.
Predicted Protein Size:	55 kDa
Gene Name:	endonuclease domain containing 1
Database Link:	NP_055851 Entrez Gene 23052 Human O94919
Background:	ENDOD1 may act as a DNase and a Rnase.
Synonyms:	KIAA0830; MGC88092
Note:	Immunogen sequence homology: Pig: 100%; Rat: 100%; Horse: 100%; Human: 100%; Guinea pig: 100%; Dog: 93%; Mouse: 93%; Rabbit: 93%; Bovine: 86%
Protein Families:	Druggable Genome, Transmembrane



[View online »](#)

Protein Pathways: Apoptosis

Product images:



Host: Rabbit; Target Name: ENDOD1; Sample
Tissue: 293T Whole Cell lysates; Antibody
Dilution: 1.0 ug/ml