

Product datasheet for **TA333852**

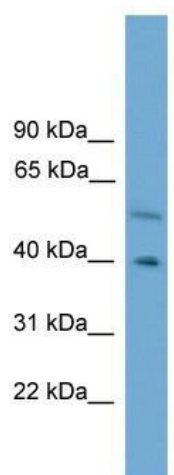
CLUAP1 Rabbit Polyclonal Antibody

Product data:

Product Type:	Primary Antibodies
Applications:	WB
Recommended Dilution:	WB
Reactivity:	Human
Host:	Rabbit
Isotype:	IgG
Clonality:	Polyclonal
Immunogen:	The immunogen for Anti-CLUAP1 Antibody: synthetic peptide directed towards the C terminal of human CLUAP1. Synthetic peptide located within the following region: RIVGTMQGGDSDDNEDSESEIDMEDDDDEDDDDLEDESISLSPTKPNRRV
Formulation:	Liquid. Purified antibody supplied in 1x PBS buffer with 0.09% (w/v) sodium azide and 2% sucrose. <i>Note that this product is shipped as lyophilized powder to China customers.</i>
Purification:	Affinity Purified
Conjugation:	Unconjugated
Storage:	Store at -20°C as received.
Stability:	Stable for 12 months from date of receipt.
Predicted Protein Size:	48 kDa
Gene Name:	clusterin associated protein 1
Database Link:	NP_055856 Entrez Gene 23059 Human Q96A11
Background:	CLUAP1 may play a role in cell proliferation or apoptosis.
Synonyms:	CFAP22; FAP22; IFT38
Note:	Immunogen sequence homology: Human: 100%; Zebrafish: 93%; Rat: 92%; Mouse: 92%; Yeast: 92%; Bovine: 86%; Goat: 85%; Pig: 79%; Horse: 79%



[View online »](#)

Product images:

WB Suggested Anti-CLUAP1 Antibody Titration:
0.2-1 ug/ml; ELISA Titer: 1: 12500; Positive
Control: ACHN cell lysate
CLUAP1 is strongly supported by BioGPS gene expression data to be expressed in Human ACHN cells