

## Product datasheet for **TA333851**

### FTSJD2 (CMTR1) Rabbit Polyclonal Antibody

#### Product data:

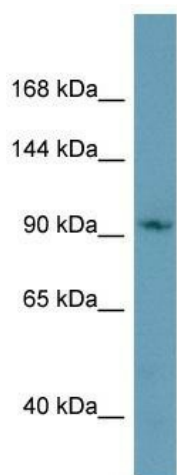
Product Type:	Primary Antibodies
Applications:	WB
Recommended Dilution:	WB
Reactivity:	Human
Host:	Rabbit
Isotype:	IgG
Clonality:	Polyclonal
Immunogen:	The immunogen for Anti-CMTR1 Antibody is: synthetic peptide directed towards the C-terminal region of Human CMTR1. Synthetic peptide located within the following region: YRLEEMEKIFVRLEMKIIKGSSGTPKLSYTGRDDRHFVPMGLYIVRTVNE
Formulation:	Liquid. Purified antibody supplied in 1x PBS buffer with 0.09% (w/v) sodium azide and 2% sucrose. <i>Note that this product is shipped as lyophilized powder to China customers.</i>
Purification:	Affinity Purified
Conjugation:	Unconjugated
Storage:	Store at -20°C as received.
Stability:	Stable for 12 months from date of receipt.
Predicted Protein Size:	95 kDa
Gene Name:	cap methyltransferase 1
Database Link:	<a href="#">NP_055865</a> <a href="#">Entrez Gene 23070 Human</a> <a href="#">Q8N1G2</a>
Background:	CMTR1 is a S-adenosyl-L-methionine-dependent methyltransferase that mediates mRNA cap1 2'-O-ribose methylation to the 5'-cap structure of mRNAs. It methylates the ribose of the first nucleotide of a m7GpppG-capped mRNA to produce m7GpppNmp (cap1). Cap1 modification is linked to higher levels of translation. It may be involved in the interferon response pathway.
Synonyms:	FTSJD2; hMTr1; KIAA0082; MTr1



[View online »](#)

**Note:** Immunogen sequence homology: Dog: 100%; Pig: 100%; Rat: 100%; Horse: 100%; Human: 100%; Mouse: 100%; Bovine: 100%; Rabbit: 93%; Guinea pig: 93%; Zebrafish: 86%

### Product images:



Host: Rabbit; Target Name: FTSJD2; Sample Tissue: ACHN Whole cell lysates; Antibody Dilution: 1.0 ug/ml