

Product datasheet for **TA333849**

SPART Rabbit Polyclonal Antibody

Product data:

Product Type:	Primary Antibodies
Applications:	WB
Recommended Dilution:	WB
Reactivity:	Human
Host:	Rabbit
Isotype:	IgG
Clonality:	Polyclonal
Immunogen:	The immunogen for Anti-SPG20 Antibody: synthetic peptide directed towards the middle region of human SPG20. Synthetic peptide located within the following region: ASWVSWGLVKGAIEITGKAIQKGASKLRERIQPEEKPVEVSPAVTKGLYIA
Formulation:	Liquid. Purified antibody supplied in 1x PBS buffer with 0.09% (w/v) sodium azide and 2% sucrose. <i>Note that this product is shipped as lyophilized powder to China customers.</i>
Purification:	Affinity Purified
Conjugation:	Unconjugated
Storage:	Store at -20°C as received.
Stability:	Stable for 12 months from date of receipt.
Predicted Protein Size:	73 kDa
Gene Name:	spastic paraplegia 20 (Troyer syndrome)
Database Link:	NP_055902 Entrez Gene 23111 Human Q8N0X7



[View online »](#)

Background:

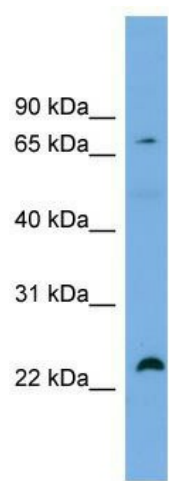
This gene encodes a protein containing a MIT (Microtubule Interacting and Trafficking molecule) domain, and is implicated in regulating endosomal trafficking and mitochondria function. The protein localizes to mitochondria and partially co-localizes with microtubules. Stimulation with epidermal growth factor (EGF) results in protein translocation to the plasma membrane, and the protein functions in the degradation and intracellular trafficking of EGF receptor. Multiple alternatively spliced variants, encoding the same protein, have been identified. Mutations associated with this gene cause autosomal recessive spastic paraplegia 20 (Troyer syndrome).

Synonyms:

SPARTIN; TAHCCP1

Note:

Immunogen sequence homology: Dog: 100%; Pig: 100%; Rat: 100%; Horse: 100%; Human: 100%; Mouse: 100%; Bovine: 100%; Rabbit: 100%; Guinea pig: 100%; Zebrafish: 79%

Product images:

WB Suggested Anti-SPG20 Antibody Titration: 0.2-1 ug/ml; Positive Control: OVCAR-3 cell lysate
SPG20 is supported by BioGPS gene expression data to be expressed in OVCAR3