

Product datasheet for **TA333848**

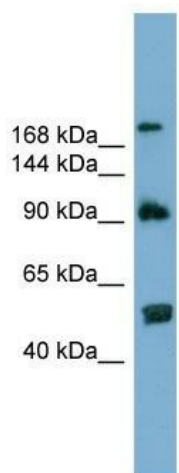
ATG2A Rabbit Polyclonal Antibody

Product data:

Product Type:	Primary Antibodies
Applications:	WB
Recommended Dilution:	WB
Reactivity:	Human
Host:	Rabbit
Isotype:	IgG
Clonality:	Polyclonal
Immunogen:	The immunogen for Anti-ATG2A Antibody: synthetic peptide directed towards the N terminal of human ATG2A. Synthetic peptide located within the following region: PRRGPAAGAAADSQSWASCMTTSLQLAQECLRDGLPEPSEPPQPLEGLEMF
Formulation:	Liquid. Purified antibody supplied in 1x PBS buffer with 0.09% (w/v) sodium azide and 2% sucrose. <i>Note that this product is shipped as lyophilized powder to China customers.</i>
Purification:	Affinity Purified
Conjugation:	Unconjugated
Storage:	Store at -20°C as received.
Stability:	Stable for 12 months from date of receipt.
Predicted Protein Size:	213 kDa
Gene Name:	autophagy related 2A
Database Link:	NP_055919 Entrez Gene 23130 Human Q2TAZ0
Background:	The function of this protein remains unknown.
Synonyms:	KIAA0404; MGC117153
Note:	Immunogen sequence homology: Dog: 100%; Pig: 100%; Rat: 100%; Horse: 100%; Human: 100%; Mouse: 100%; Bovine: 100%; Rabbit: 100%; Guinea pig: 93%; Zebrafish: 80%



[View online »](#)

Product images:

WB Suggested Anti-ATG2A Antibody Titration: 0.2-1 ug/ml; Positive Control: 293T cell lysate. ATG2A is supported by BioGPS gene expression data to be expressed in HEK293T.