

## Product datasheet for **TA333847**

### ANKLE2 Rabbit Polyclonal Antibody

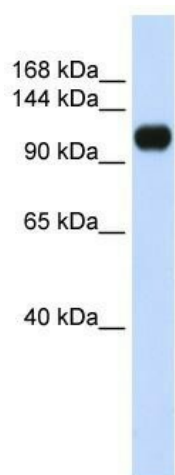
#### Product data:

Product Type:	Primary Antibodies
Applications:	WB
Recommended Dilution:	WB
Reactivity:	Human
Host:	Rabbit
Isotype:	IgG
Clonality:	Polyclonal
Immunogen:	The immunogen for Anti-ANKLE2 Antibody: synthetic peptide directed towards the middle region of human ANKLE2. Synthetic peptide located within the following region: CYSPDRQSWPSPAVKGRFKSQLPDLSGPHSYSPGRNSVAGSNPAKPGLG
Formulation:	Liquid. Purified antibody supplied in 1x PBS buffer with 0.09% (w/v) sodium azide and 2% sucrose. <i>Note that this product is shipped as lyophilized powder to China customers.</i>
Purification:	Affinity Purified
Conjugation:	Unconjugated
Storage:	Store at -20°C as received.
Stability:	Stable for 12 months from date of receipt.
Predicted Protein Size:	104 kDa
Gene Name:	ankyrin repeat and LEM domain containing 2
Database Link:	<a href="#">NP_055929</a> <a href="#">Entrez Gene 23141 Human</a> <a href="#">Q86XL3</a>
Background:	ANKLE2 is a single-pass membrane protein. It contains 1 ANK repeat and 1 LEM domain. It contains 1 RING-type zinc finger. The function of ANKLE2 remains unknown.
Synonyms:	KIAA0692; Lem4; LEMD7; MCPH16
Note:	Immunogen sequence homology: Human: 100%
Protein Families:	Transmembrane



[View online »](#)

## Product images:



WB Suggested Anti-KIAA0692 Antibody Titration: 0.2-1 ug/ml; ELISA Titer: 1: 62500; Positive Control: 293T cell lysate There is BioGPS gene expression data showing that ANKLE2 is expressed in HEK293T