

Product datasheet for **TA333846**

FCHO1 Rabbit Polyclonal Antibody

Product data:

Product Type:	Primary Antibodies
Applications:	IHC, WB
Recommended Dilution:	WB, IHC
Reactivity:	Human
Host:	Rabbit
Isotype:	IgG
Clonality:	Polyclonal
Immunogen:	The immunogen for Anti-FCHO1 Antibody: synthetic peptide directed towards the middle region of human FCHO1. Synthetic peptide located within the following region: SPENVDSGLDSPSHAAPGSPDSWVPRPGTPQSPPSCRAPPPEARARGIRA
Formulation:	Liquid. Purified antibody supplied in 1x PBS buffer with 0.09% (w/v) sodium azide and 2% sucrose.
Purification:	Affinity Purified
Conjugation:	Unconjugated
Storage:	Store at -20°C as received.
Stability:	Stable for 12 months from date of receipt.
Predicted Protein Size:	97 kDa
Gene Name:	FCH domain only 1
Database Link:	NP_055937 Entrez Gene 23149 Human O14526
Background:	FCHO1 is involved in clathrin-coated vesicle formation.
Synonyms:	KIAA0290
Note:	Immunogen sequence homology: Dog: 100%; Pig: 100%; Rat: 100%; Human: 100%; Mouse: 100%; Bovine: 100%; Zebrafish: 100%; Guinea pig: 100%

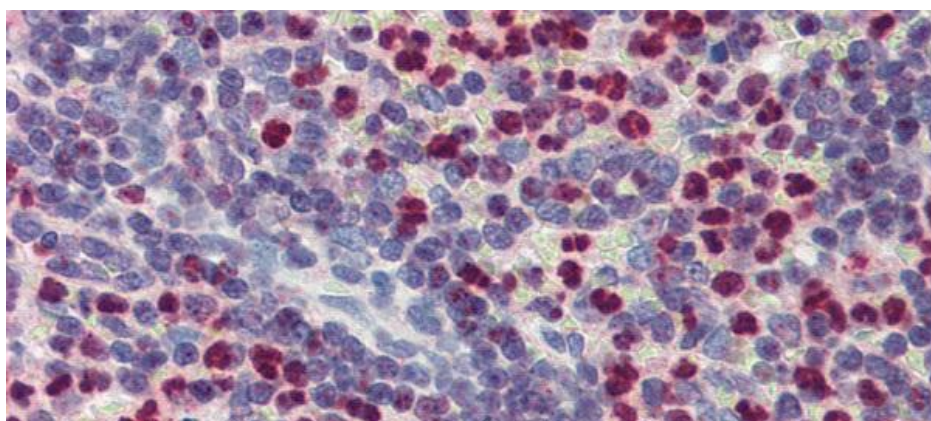


[View online »](#)

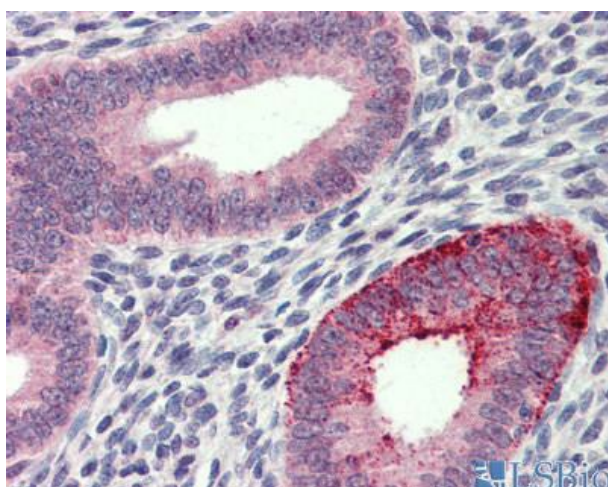
Product images:



WB Suggested Anti-FCHO1 Antibody Titration: 1 ug/ml; Positive Control: 293T cells lysate



Immunohistochemistry with Human Spleen lysate tissue at an antibody concentration of 5.0 ug/ml using anti-FCHO1 antibody



Human Uterus