

Product datasheet for **TA333845**

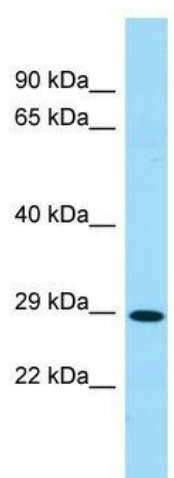
SLC35D1 Rabbit Polyclonal Antibody

Product data:

Product Type:	Primary Antibodies
Applications:	WB
Recommended Dilution:	WB
Reactivity:	Human
Host:	Rabbit
Isotype:	IgG
Clonality:	Polyclonal
Immunogen:	The immunogen for Anti-SLC35D1 Antibody is: synthetic peptide directed towards the middle region of Human SLC35D1. Synthetic peptide located within the following region: SDLAFDLEGYAFILINDVLTAAANGAYVKQKLDSEKELGKYGLLYNALFM
Formulation:	Liquid. Purified antibody supplied in 1x PBS buffer with 0.09% (w/v) sodium azide and 2% sucrose.
Purification:	Affinity Purified
Conjugation:	Unconjugated
Storage:	Store at -20°C as received.
Stability:	Stable for 12 months from date of receipt.
Predicted Protein Size:	28 kDa
Gene Name:	solute carrier family 35 member D1
Database Link:	NP_055954 Entrez Gene 23169 Human Q9NTN3
Background:	The function of this protein remains unknown.
Synonyms:	UGTREL7
Note:	Immunogen sequence homology: Pig: 100%; Rat: 100%; Horse: 100%; Human: 100%; Mouse: 100%; Bovine: 100%; Rabbit: 100%; Guinea pig: 100%; Dog: 93%; Zebrafish: 85%
Protein Families:	Transmembrane



[View online »](#)

Product images:

Host: Rabbit; Target Name: SLC35D1; Sample
Tissue: Fetal Heart lysates; Antibody Dilution: 1.0
ug/ml