

Product datasheet for **TA333844**

GPD1L Rabbit Polyclonal Antibody

Product data:

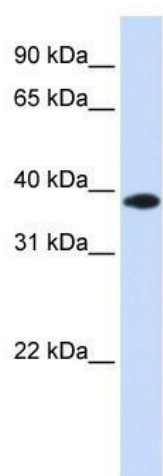
Product Type:	Primary Antibodies
Applications:	WB
Recommended Dilution:	WB
Reactivity:	Human
Host:	Rabbit
Isotype:	IgG
Clonality:	Polyclonal
Immunogen:	The immunogen for Anti-GPD1L Antibody: synthetic peptide directed towards the middle region of human GPD1L. Synthetic peptide located within the following region: ELEKEMLNQKLQGPQTSAEVYRILKQKGLLDKFLFTAVYQICYESRPV
Formulation:	Liquid. Purified antibody supplied in 1x PBS buffer with 0.09% (w/v) sodium azide and 2% sucrose. <i>Note that this product is shipped as lyophilized powder to China customers.</i>
Purification:	Affinity Purified
Conjugation:	Unconjugated
Storage:	Store at -20°C as received.
Stability:	Stable for 12 months from date of receipt.
Predicted Protein Size:	38 kDa
Gene Name:	glycerol-3-phosphate dehydrogenase 1-like
Database Link:	NP_055956 Entrez Gene 23171 Human Q8N335
Background:	GPD1L belongs to the NAD-dependent glycerol-3-phosphate dehydrogenase family. Defects in GPD1L are the cause of Brugada syndrome type 2 (BRS2) and sudden infant death syndrome (SIDS).
Synonyms:	GPD1-L
Note:	Immunogen sequence homology: Dog: 100%; Pig: 100%; Rat: 100%; Horse: 100%; Human: 100%; Mouse: 100%; Bovine: 100%; Rabbit: 100%; Guinea pig: 100%; Zebrafish: 93%



[View online »](#)

Protein Pathways: Glycerophospholipid metabolism

Product images:



WB Suggested Anti-GPD1L Antibody Titration:
0.2-1 ug/ml; ELISA Titer: 1: 312500; Positive
Control: Human Muscle