

Product datasheet for **TA333843**

Methionyl Aminopeptidase 1 (METAP1) Rabbit Polyclonal Antibody

Product data:

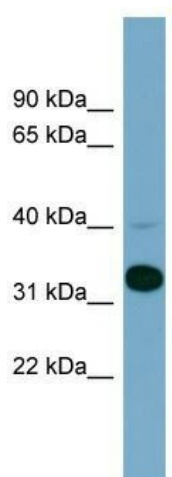
Product Type:	Primary Antibodies
Applications:	WB
Recommended Dilution:	WB
Reactivity:	Human
Host:	Rabbit
Isotype:	IgG
Clonality:	Polyclonal
Immunogen:	The immunogen for Anti-METAP1 Antibody: synthetic peptide directed towards the N terminal of human METAP1. Synthetic peptide located within the following region: GDINTDPWAGYRYTGKLRPHYPLMPTRPVPSYIQRPDYADHPLGMSESEQ
Formulation:	Liquid. Purified antibody supplied in 1x PBS buffer with 0.09% (w/v) sodium azide and 2% sucrose. <i>Note that this product is shipped as lyophilized powder to China customers.</i>
Purification:	Affinity Purified
Conjugation:	Unconjugated
Storage:	Store at -20°C as received.
Stability:	Stable for 12 months from date of receipt.
Predicted Protein Size:	30 kDa
Gene Name:	methionyl aminopeptidase 1
Database Link:	NP_055958 Entrez Gene 23173 Human P53582
Background:	METAP1 removes the amino-terminal methionine from nascent proteins. METAP1 is required for normal progression through the cell cycle.
Synonyms:	MAP1A; MetAP1A
Note:	Immunogen sequence homology: Dog: 100%; Pig: 100%; Rat: 100%; Horse: 100%; Human: 100%; Mouse: 100%; Bovine: 100%; Rabbit: 100%; Guinea pig: 100%; Zebrafish: 82%



[View online »](#)

Protein Families: Druggable Genome

Product images:



WB Suggested Anti-METAP1 Antibody Titration:
0.2-1 ug/ml; ELISA Titer: 1: 312500; Positive
Control: COLO205 cell lysate METAP1 is supported
by BioGPS gene expression data to be expressed
in COLO205