

Product datasheet for **TA333842**

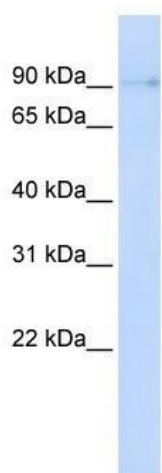
ZCCHC14 Rabbit Polyclonal Antibody

Product data:

Product Type:	Primary Antibodies
Applications:	WB
Recommended Dilution:	WB
Reactivity:	Human
Host:	Rabbit
Isotype:	IgG
Clonality:	Polyclonal
Immunogen:	The immunogen for Anti-ZCCHC14 Antibody: synthetic peptide directed towards the N terminal of human ZCCHC14. Synthetic peptide located within the following region: RYLASLPSHVLKNDHVRRFLSTSSPPQQLQSPSPGNPSLSKVGTVMGVSG
Formulation:	Liquid. Purified antibody supplied in 1x PBS buffer with 0.09% (w/v) sodium azide and 2% sucrose. <i>Note that this product is shipped as lyophilized powder to China customers.</i>
Purification:	Affinity Purified
Conjugation:	Unconjugated
Storage:	Store at -20°C as received.
Stability:	Stable for 12 months from date of receipt.
Predicted Protein Size:	100 kDa
Gene Name:	zinc finger CCHC-type containing 14
Database Link:	NP_055959 Entrez Gene 23174 Human Q8WYQ9
Background:	ZCCHC14 contains 1 CCHC-type zinc finger. The function of ZCCHC14 remains unknown.
Synonyms:	BDG-29; BDG29
Note:	Immunogen sequence homology: Human: 100%; Rat: 93%; Mouse: 93%; Bovine: 93%; Pig: 92%; Horse: 92%; Guinea pig: 92%; Dog: 86%; Rabbit: 79%



[View online »](#)

Product images:

WB Suggested Anti-ZCCHC14 Antibody Titration: 0.2-1 ug/ml; ELISA Titer: 1: 312500; Positive Control: MCF7 cell lysate. There is BioGPS gene expression data showing that ZCCHC14 is expressed in MCF7.