

Product datasheet for **TA333841**

PHLDB1 Rabbit Polyclonal Antibody

Product data:

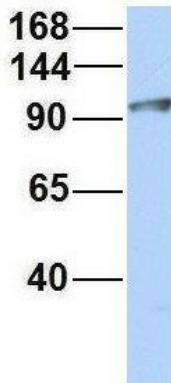
| | |
|-------------------------|---|
| Product Type: | Primary Antibodies |
| Applications: | WB |
| Recommended Dilution: | WB |
| Reactivity: | Human |
| Host: | Rabbit |
| Isotype: | IgG |
| Clonality: | Polyclonal |
| Immunogen: | The immunogen for Anti-PHLDB1 Antibody: synthetic peptide directed towards the middle region of human PHLDB1. Synthetic peptide located within the following region: GPSGFPPLMHHSILHHLPAGREREGEEHAYDTLSLESSDSMETSISTGG |
| Formulation: | Liquid. Purified antibody supplied in 1x PBS buffer with 0.09% (w/v) sodium azide and 2% sucrose. <i>Note that this product is shipped as lyophilized powder to China customers.</i> |
| Purification: | Affinity Purified |
| Conjugation: | Unconjugated |
| Storage: | Store at -20°C as received. |
| Stability: | Stable for 12 months from date of receipt. |
| Predicted Protein Size: | 151 kDa |
| Gene Name: | pleckstrin homology like domain family B member 1 |
| Database Link: | NP_055972 Entrez Gene 23187 Human Q86UU1 |
| Background: | The function of this protein remains unknown. |
| Synonyms: | LL5A |
| Note: | Immunogen sequence homology: Dog: 100%; Pig: 100%; Rat: 100%; Horse: 100%; Human: 100%; Mouse: 100%; Bovine: 100%; Rabbit: 100%; Guinea pig: 86% |



[View online »](#)

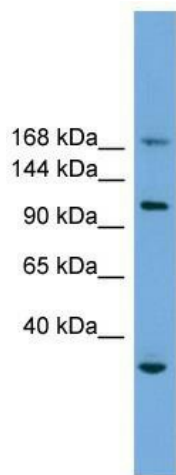
Product images:

PHLDB1



Rabbit Anti-PHLDB1
 Sample Type: Human 293T
 Antibody Concentration: 1ug/mL

Host: Rabbit; Target Name: PHLDB1; Sample Tissue: 293T; Antibody Dilution: 1.0 ug/ml



WB Suggested Anti-PHLDB1 Antibody Titration: 0.2-1 ug/ml; Positive Control: 721_B cell lysate
 PHLDB1 is strongly supported by BioGPS gene expression data to be expressed in Human 721_B cells