

Product datasheet for **TA333840**

TBC1D1 Rabbit Polyclonal Antibody

Product data:

Product Type:	Primary Antibodies
Applications:	IHC, WB
Recommended Dilution:	WB, IHC
Reactivity:	Human
Host:	Rabbit
Isotype:	IgG
Clonality:	Polyclonal
Immunogen:	The immunogen for Anti-TBC1D1 Antibody: synthetic peptide directed towards the middle region of human TBC1D1. Synthetic peptide located within the following region: RGSPGVSQRKLMRYHSVSTETPHERKDFESKANHLGDSGGTPVKTRRHSW
Formulation:	Liquid. Purified antibody supplied in 1x PBS buffer with 0.09% (w/v) sodium azide and 2% sucrose. <i>Note that this product is shipped as lyophilized powder to China customers.</i>
Purification:	Affinity Purified
Conjugation:	Unconjugated
Storage:	Store at -20°C as received.
Stability:	Stable for 12 months from date of receipt.
Predicted Protein Size:	133 kDa
Gene Name:	TBC1 domain family member 1
Database Link:	NP_055988 Entrez Gene 23216 Human Q86TI0



[View online »](#)

Background:

TBC1D1 is the founding member of a family of proteins sharing a 180- to 200-amino acid TBC domain presumed to have a role in regulating cell growth and differentiation. These proteins share significant homology with TRE2 (USP6), yeast Bub2, and CDC16. TBC1D1 is the founding member of a family of proteins sharing a 180- to 200-amino acid TBC domain presumed to have a role in regulating cell growth and differentiation. These proteins share significant homology with TRE2 (USP6; MIM 604334), yeast Bub2, and CDC16 (MIM 603461) (White et al., 2000 [PubMed 10965142]). [supplied by OMIM]. PRIMARYREFSEQ_SPAN PRIMARY_IDENTIFIER PRIMARY_SPAN COMP 1-225 BC050321.1 13-237 226-950 BC050321.1 896-1620 951-1020 BC028196.1 226-295 1021-1123 BC029950.1 255-357 1124-1433 BC028196.1 399-708 1434-1608 BC029950.1 668-842 1609-4133 BC053648.1 437-2961 4134-5688 AK074954.1 1433-2987

Synonyms:

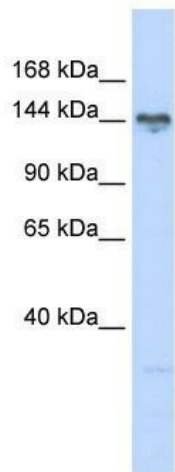
TBC; TBC1

Note:

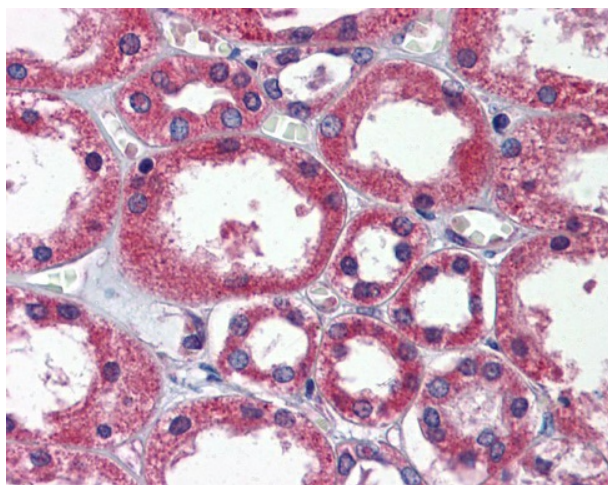
Immunogen sequence homology: Pig: 100%; Rat: 100%; Human: 100%; Mouse: 100%; Bovine: 100%; Guinea pig: 100%; Horse: 93%; Dog: 79%

Protein Families:

Druggable Genome

Product images:

WB Suggested Anti-TBC1D1 Antibody Titration: 0.2-1 ug/ml; ELISA Titer: 1: 312500; Positive Control: 721_B cell lysate TBC1D1 is supported by BioGPS gene expression data to be expressed in 721_B



Human Kidney