

Product datasheet for **TA333837**

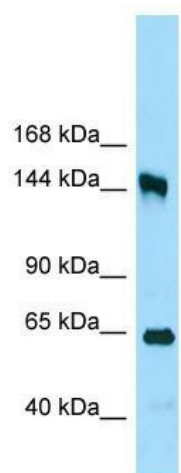
RRP12 Rabbit Polyclonal Antibody

Product data:

Product Type:	Primary Antibodies
Applications:	WB
Recommended Dilution:	WB
Reactivity:	Human
Host:	Rabbit
Isotype:	IgG
Clonality:	Polyclonal
Immunogen:	The immunogen for Anti-RRP12 Antibody is: synthetic peptide directed towards the C-terminal region of Human RRP12. Synthetic peptide located within the following region: AQRVLATQPGPGRGRKKDHGFKVSADGRLIREEADGNKMEEEEGAKGED
Formulation:	Liquid. Purified antibody supplied in 1x PBS buffer with 0.09% (w/v) sodium azide and 2% sucrose. <i>Note that this product is shipped as lyophilized powder to China customers.</i>
Purification:	Affinity Purified
Conjugation:	Unconjugated
Storage:	Store at -20°C as received.
Stability:	Stable for 12 months from date of receipt.
Predicted Protein Size:	143 kDa
Gene Name:	ribosomal RNA processing 12 homolog
Database Link:	NP_055994 Entrez Gene 23223 Human Q5JTH9
Background:	The function of this protein remains unknown.
Synonyms:	KIAA0690
Note:	Immunogen sequence homology: Human: 100%; Pig: 93%; Rat: 93%; Horse: 93%; Bovine: 93%; Guinea pig: 93%; Mouse: 86%; Rabbit: 86%; Dog: 77%



[View online »](#)

Product images:

WB Suggested Anti-RRP12 Antibody; Titration: 1.0 ug/ml; Positive Control: 293T Whole Cell RRP12 is strongly supported by BioGPS gene expression data to be expressed in Human HEK293T cells