

Product datasheet for **TA333836**

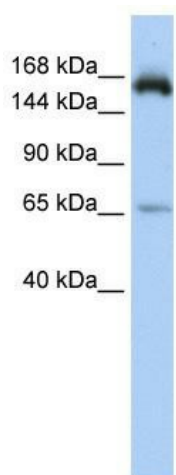
KIAA0460 (RPRD2) Rabbit Polyclonal Antibody

Product data:

Product Type:	Primary Antibodies
Applications:	WB
Recommended Dilution:	WB
Reactivity:	Human
Host:	Rabbit
Isotype:	IgG
Clonality:	Polyclonal
Immunogen:	The immunogen for Anti-RPRD2 Antibody: synthetic peptide directed towards the middle region of human RPRD2. Synthetic peptide located within the following region: LQGTLAEHFGVLPGRDHGGPTQRDLNGPGLSRVRESLTLP SHSLEHLGP
Formulation:	Liquid. Purified antibody supplied in 1x PBS buffer with 0.09% (w/v) sodium azide and 2% sucrose.
Purification:	Affinity Purified
Conjugation:	Unconjugated
Storage:	Store at -20°C as received.
Stability:	Stable for 12 months from date of receipt.
Predicted Protein Size:	152 kDa
Gene Name:	regulation of nuclear pre-mRNA domain containing 2
Database Link:	NP_056018 Entrez Gene 23248 Human Q5VT52
Background:	RPRD2 contains 1 CID domain. The function of RPRD2 remains unknown.
Synonyms:	HSPC099; KIAA0460
Note:	Immunogen sequence homology: Dog: 100%; Pig: 100%; Horse: 100%; Human: 100%; Bovine: 100%; Rabbit: 100%; Rat: 86%; Guinea pig: 86%



[View online »](#)

Product images:


WB Suggested Anti-KIAA0460 Antibody Titration:
 0.2-1 ug/ml; ELISA Titer: 1: 312500; Positive
 Control: HepG2 cell lysate RPRD2 is supported by
 BioGPS gene expression data to be expressed in
 HepG2