

## Product datasheet for **TA333835**

### DDHD2 Rabbit Polyclonal Antibody

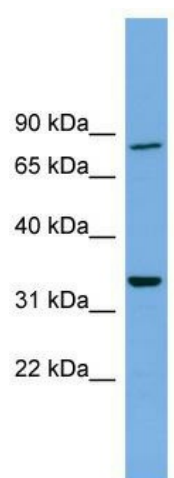
#### Product data:

Product Type:	Primary Antibodies
Applications:	WB
Recommended Dilution:	WB
Reactivity:	Human
Host:	Rabbit
Isotype:	IgG
Clonality:	Polyclonal
Immunogen:	The immunogen for Anti-DDHD2 Antibody: synthetic peptide directed towards the N terminal of human DDHD2. Synthetic peptide located within the following region: DGWGSTPTEQGRPRTVKRGVENISVDIHCGEPLQIDHLVFVHVGIGPACD
Formulation:	Liquid. Purified antibody supplied in 1x PBS buffer with 0.09% (w/v) sodium azide and 2% sucrose.
Purification:	Affinity Purified
Conjugation:	Unconjugated
Storage:	Store at -20°C as received.
Stability:	Stable for 12 months from date of receipt.
Predicted Protein Size:	81 kDa
Gene Name:	DDHD domain containing 2
Database Link:	<a href="#">NP_056029</a> <a href="#">Entrez Gene 23259 Human</a> <a href="#">O94830</a>
Background:	DDHD2 is a phospholipase that hydrolyzes preferentially phosphatidic acid and phosphatidylethanolamine. DDHD2 may be involved in the maintenance of the endoplasmic reticulum and/or Golgi structures.
Synonyms:	iPLA(1)gamma; SAMWD1; SPG54
Note:	Immunogen sequence homology: Dog: 100%; Pig: 100%; Rat: 100%; Horse: 100%; Human: 100%; Rabbit: 100%; Guinea pig: 93%; Mouse: 86%; Bovine: 86%



[View online »](#)

## Product images:



WB Suggested Anti-DDHD2 Antibody Titration:  
0.2-1 ug/ml; Positive Control: THP-1 cell lysate