

## Product datasheet for **TA333833**

### AGTPBP1 Rabbit Polyclonal Antibody

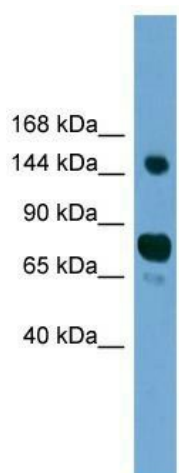
#### Product data:

Product Type:	Primary Antibodies
Applications:	WB
Recommended Dilution:	WB
Reactivity:	Human
Host:	Rabbit
Isotype:	IgG
Clonality:	Polyclonal
Immunogen:	The immunogen for Anti-AGTPBP1 Antibody: synthetic peptide directed towards the N terminal of human AGTPBP1. Synthetic peptide located within the following region: KAFIDANGMKILYNTSQLPVIPVTGPVAQLYSLPPEVDDVVDESDDNDDI
Formulation:	Liquid. Purified antibody supplied in 1x PBS buffer with 0.09% (w/v) sodium azide and 2% sucrose.
Purification:	Affinity Purified
Conjugation:	Unconjugated
Storage:	Store at -20°C as received.
Stability:	Stable for 12 months from date of receipt.
Predicted Protein Size:	134 kDa
Gene Name:	ATP/GTP binding protein 1
Database Link:	<a href="#">NP_056054</a> <a href="#">Entrez Gene 23287 Human</a> <a href="#">Q9UPW5</a>
Background:	NNA1 is a zinc carboxypeptidase that contains nuclear localization signals and an ATP/GTP-binding motif that was initially cloned from regenerating spinal cord neurons of the mouse.
Synonyms:	CCP1; NNA1
Note:	Immunogen sequence homology: Dog: 100%; Pig: 100%; Rat: 100%; Horse: 100%; Human: 100%; Mouse: 100%; Bovine: 100%; Rabbit: 100%; Guinea pig: 93%; Zebrafish: 86%
Protein Families:	Protease



[View online »](#)

## Product images:



WB Suggested Anti-AGTPBP1 Antibody Titration:  
0.2-1 ug/ml; Positive Control: HepG2 cell lysate