

Product datasheet for **TA333832**

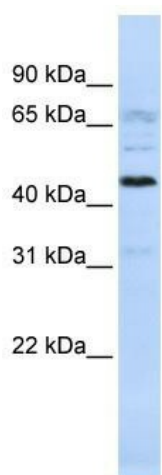
C22orf9 (KIAA0930) Rabbit Polyclonal Antibody

Product data:

Product Type:	Primary Antibodies
Applications:	WB
Recommended Dilution:	WB
Reactivity:	Human
Host:	Rabbit
Isotype:	IgG
Clonality:	Polyclonal
Immunogen:	The immunogen for Anti-KIAA0930 Antibody: synthetic peptide directed towards the middle region of human KIAA0930. Synthetic peptide located within the following region: ERVTSFSTPPTPERNNRPAFFSPSLKRKVPNRNRI AEMKKS H S A N D S E E F F
Formulation:	Liquid. Purified antibody supplied in 1x PBS buffer with 0.09% (w/v) sodium azide and 2% sucrose. <i>Note that this product is shipped as lyophilized powder to China customers.</i>
Purification:	Affinity Purified
Conjugation:	Unconjugated
Storage:	Store at -20°C as received.
Stability:	Stable for 12 months from date of receipt.
Predicted Protein Size:	46 kDa
Gene Name:	KIAA0930
Database Link:	NP_056079 Entrez Gene 23313 Human Q6ICG6
Background:	The function of KIAA0930 remains unknown.
Synonyms:	C22orf9; LSC3
Note:	Immunogen sequence homology: Dog: 100%; Pig: 100%; Rat: 100%; Horse: 100%; Human: 100%; Mouse: 100%; Bovine: 100%; Guinea pig: 100%; Rabbit: 86%



[View online »](#)

Product images:

WB Suggested Anti-C22orf9 Antibody Titration:
0.2-1 ug/ml; ELISA Titer: 1: 312500; Positive
Control: 721_B cell lysate KIAA0930 is strongly
supported by BioGPS gene expression data to be
expressed in Human 721_B cells