

## Product datasheet for TA333831

### SLC9A8 Rabbit Polyclonal Antibody

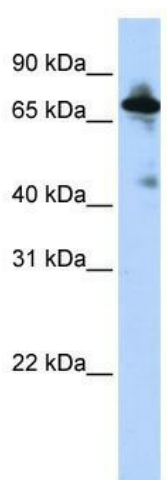
#### Product data:

Product Type:	Primary Antibodies
Applications:	WB
Recommended Dilution:	WB
Reactivity:	Human
Host:	Rabbit
Isotype:	IgG
Clonality:	Polyclonal
Immunogen:	The immunogen for Anti-SLC9A8 Antibody: synthetic peptide directed towards the middle region of human SLC9A8. Synthetic peptide located within the following region: AKYLNPFTRRLTQEDLHHGRIQMKTLTNKWYEEVRQGPGSGEDDEQELL
Formulation:	Liquid. Purified antibody supplied in 1x PBS buffer with 0.09% (w/v) sodium azide and 2% sucrose.
Purification:	Affinity Purified
Conjugation:	Unconjugated
Storage:	Store at -20°C as received.
Stability:	Stable for 12 months from date of receipt.
Predicted Protein Size:	65 kDa
Gene Name:	solute carrier family 9 member A8
Database Link:	<a href="#">NP_056081</a> <a href="#">Entrez Gene 23315 Human</a> <a href="#">Q9Y2E8</a>
Background:	Sodium-hydrogen exchangers (NHEs), such as SLC9A8, are integral transmembrane proteins that exchange extracellular Na <sup>+</sup> for intracellular H <sup>+</sup> . NHEs have multiple functions, including intracellular pH homeostasis, cell volume regulation, and electroneutral NaCl absorption in epithelia.
Synonyms:	NHE-8; NHE8
Note:	Immunogen sequence homology: Dog: 100%; Pig: 100%; Rat: 100%; Horse: 100%; Human: 100%; Mouse: 100%; Rabbit: 100%; Guinea pig: 100%; Bovine: 93%; Zebrafish: 93%


[View online »](#)

Protein Families: Druggable Genome, Transmembrane

### Product images:



WB Suggested Anti-SLC9A8 Antibody Titration:  
0.2-1 ug/ml; ELISA Titer: 1:312500; Positive  
Control: HepG2 cell lysate