

Product datasheet for TA333830

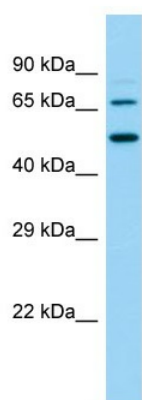
SLC9A8 Rabbit Antibody

Product data:

Product Type:	Primary Antibodies
Reactivity:	Rat
Host:	Rabbit
Isotype:	IgG
Immunogen:	The immunogen for Anti-Slc9a8 Antibody is: synthetic peptide directed towards the N-terminal region of Rat Slc9a8. Synthetic peptide located within the following region: LHKGNFFQNIGSITLFAVFGTAISAFVVGGGIYFLGQADVSKLNMTDSF
Formulation:	Shipped as lyophilized powder. Purified antibody supplied in 1x PBS buffer with 0.09% (w/v) sodium azide and 2% sucrose.
Purification:	Affinity Purified
Conjugation:	Unconjugated
Storage:	Store at -20°C as received.
Stability:	Stable for 12 months from date of receipt.
Predicted Protein Size:	63 kDa
Database Link:	NP_056081 Entrez Gene 311651 Rat
Background:	Slc9a8 is involved in pH regulation to eliminate acids generated by active metabolism or to counter adverse environmental conditions. It is a major proton extruding system driven by the inward sodium ion chemical gradient and plays an important role in signal transduction.
Synonyms:	NHE-8; NHE8
Note:	Immunogen sequence homology: Dog: 100%; Pig: 100%; Rat: 100%; Horse: 100%; Human: 100%; Mouse: 100%; Bovine: 100%; Rabbit: 100%; Zebrafish: 100%; Guinea pig: 100%; Yeast: 77%
Protein Families:	Druggable Genome, Transmembrane


[View online »](#)

Product images:



Host: Rabbit
 Target Name: Slc9a8
 Sample Type: Rat Small Intestine lysates
 Antibody Dilution: 1.0ug/ml