

Product datasheet for **TA333829**

UFL1 Rabbit Polyclonal Antibody

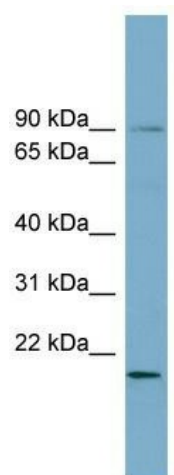
Product data:

Product Type:	Primary Antibodies
Applications:	WB
Recommended Dilution:	WB
Reactivity:	Human
Host:	Rabbit
Isotype:	IgG
Clonality:	Polyclonal
Immunogen:	The immunogen for Anti-UFL1 Antibody: synthetic peptide directed towards the middle region of human UFL1. Synthetic peptide located within the following region: EYLIKPLNKTYLEVRSVFMSTTSASGTGRKRTIKDLQEEVSNLYNNIR
Formulation:	Liquid. Purified antibody supplied in 1x PBS buffer with 0.09% (w/v) sodium azide and 2% sucrose. <i>Note that this product is shipped as lyophilized powder to China customers.</i>
Purification:	Affinity Purified
Conjugation:	Unconjugated
Storage:	Store at -20°C as received.
Stability:	Stable for 12 months from date of receipt.
Predicted Protein Size:	89 kDa
Gene Name:	UFM1 specific ligase 1
Database Link:	NP_056138 Entrez Gene 23376 Human O94874
Background:	UFL1 is an E3 UFM1-protein ligase that mediates ufmylation of target proteins such as DDRGK1/C20orf116. The function of ufmylation is unknown.
Synonyms:	KIAA0776; Maser; NLBP; RCAD
Note:	Immunogen sequence homology: Dog: 100%; Pig: 100%; Rat: 100%; Horse: 100%; Human: 100%; Mouse: 100%; Bovine: 100%; Rabbit: 100%; Guinea pig: 100%



[View online »](#)

Product images:



WB Suggested Anti-KIAA0776 Antibody Titration:
0.2-1 ug/ml; ELISA Titer: 1: 312500; Positive
Control: Human kidney