

Product datasheet for **TA333822**

DCAF13 Rabbit Polyclonal Antibody

Product data:

Product Type:	Primary Antibodies
Applications:	WB
Recommended Dilution:	WB
Reactivity:	Human
Host:	Rabbit
Isotype:	IgG
Clonality:	Polyclonal
Immunogen:	The immunogen for Anti-DCAF13 Antibody: synthetic peptide directed towards the N terminal of human DCAF13. Synthetic peptide located within the following region: WSPAGRATEMKVKMLSRNPDPNYVRETKLDLQRPVPRNYDPALHPFEVPREY
Formulation:	Liquid. Purified antibody supplied in 1x PBS buffer with 0.09% (w/v) sodium azide and 2% sucrose. <i>Note that this product is shipped as lyophilized powder to China customers.</i>
Purification:	Affinity Purified
Conjugation:	Unconjugated
Storage:	Store at -20°C as received.
Stability:	Stable for 12 months from date of receipt.
Predicted Protein Size:	67 kDa
Gene Name:	DDB1 and CUL4 associated factor 13
Database Link:	NP_056235 Entrez Gene 25879 Human Q9NV06
Background:	DCAF13 belongs to the WD repeat DCAF13 family. It contains 7 WD repeats. DCAF13 is a possible role in ribosomal RNA processing.
Synonyms:	GM83; HSPC064; WDSOF1
Note:	Immunogen sequence homology: Dog: 100%; Pig: 100%; Rat: 100%; Horse: 100%; Human: 100%; Mouse: 100%; Rabbit: 100%; Guinea pig: 100%; Bovine: 93%; Zebrafish: 83%

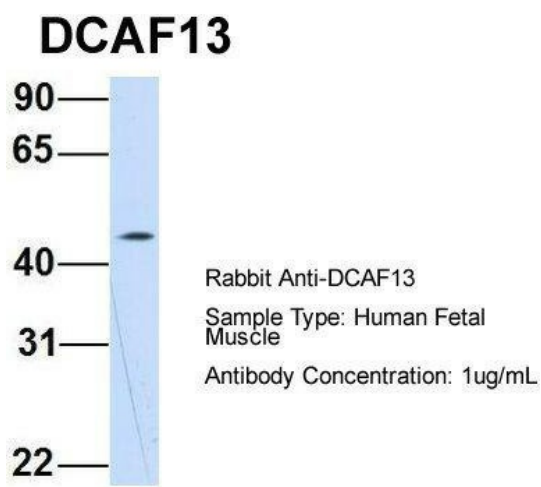


[View online »](#)

Product images:



WB Suggested Anti-WDSOF1 Antibody Titration:
0.2-1 ug/ml; ELISA Titer: 1: 312500; Positive
Control: HepG2 cell lysate



Host: Rabbit; Target Name: DCAF13; Sample
Tissue: Human Fetal Muscle; Antibody Dilution:
1.0 ug/ml