

## Product datasheet for **TA333821**

### CCDC28A Rabbit Polyclonal Antibody

#### Product data:

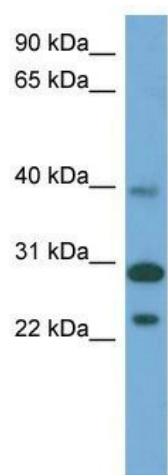
Product Type:	Primary Antibodies
Applications:	WB
Recommended Dilution:	WB
Reactivity:	Human
Host:	Rabbit
Isotype:	IgG
Clonality:	Polyclonal
Immunogen:	The immunogen for Anti-CCDC28A Antibody: synthetic peptide directed towards the middle region of human CCDC28A. Synthetic peptide located within the following region: ERGLLSLLNDFHSGKLQAFGNECSIEQMEHVVRGMQEKLARLNLELYGELE
Formulation:	Liquid. Purified antibody supplied in 1x PBS buffer with 0.09% (w/v) sodium azide and 2% sucrose.
Purification:	Affinity Purified
Conjugation:	Unconjugated
Storage:	Store at -20°C as received.
Stability:	Stable for 12 months from date of receipt.
Predicted Protein Size:	30 kDa
Gene Name:	coiled-coil domain containing 28A
Database Link:	<a href="#">NP_056254</a> <a href="#">Entrez Gene 25901 Human</a> <a href="#">Q8IWP9</a>
Background:	This gene is located in a region close to the locus of the pseudogene of chemokine (C-C motif) receptor-like 1 on chromosome 6. The specific function of this gene has not yet been determined.
Synonyms:	C6orf80; CCRL1AP
Note:	Immunogen sequence homology: Dog: 100%; Pig: 100%; Rat: 100%; Horse: 100%; Human: 100%; Mouse: 100%; Bovine: 100%; Rabbit: 100%; Zebrafish: 100%; Guinea pig: 100%



[View online »](#)

Protein Families: Druggable Genome

### Product images:



WB Suggested Anti-CCDC28A Antibody Titration:  
0.2-1 ug/ml; ELISA Titer: 1: 312500; Positive  
Control: Human Muscle