

## Product datasheet for **TA333819**

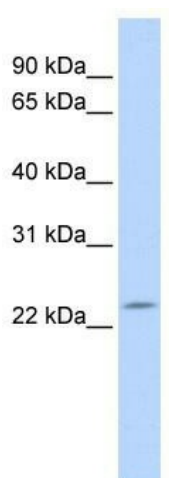
### DPCD Rabbit Polyclonal Antibody

#### Product data:

Product Type:	Primary Antibodies
Applications:	WB
Recommended Dilution:	WB
Reactivity:	Human
Host:	Rabbit
Isotype:	IgG
Clonality:	Polyclonal
Immunogen:	The immunogen for Anti-DPCD Antibody: synthetic peptide directed towards the N terminal of human DPCD. Synthetic peptide located within the following region: MAEYDEKTSSELLVRKWRVKSALGAMGQWQLEVGDPAPLGAGNLGPELIK
Formulation:	Liquid. Purified antibody supplied in 1x PBS buffer with 0.09% (w/v) sodium azide and 2% sucrose. <i>Note that this product is shipped as lyophilized powder to China customers.</i>
Purification:	Affinity Purified
Conjugation:	Unconjugated
Storage:	Store at -20°C as received.
Stability:	Stable for 12 months from date of receipt.
Predicted Protein Size:	23 kDa
Gene Name:	deleted in primary ciliary dyskinesia homolog (mouse)
Database Link:	<a href="#">NP_056263</a> <a href="#">Entrez Gene 25911 Human</a> <a href="#">Q9BVM2</a>
Background:	DPCD belongs to the DPCD family. It may play a role in the formation or function of ciliated cells. Deletion of the DPCD gene may be a cause of primary ciliary dyskinesia (PCD).
Synonyms:	RP11-529I10.4
Note:	Immunogen sequence homology: Pig: 100%; Rat: 100%; Horse: 100%; Human: 100%; Mouse: 100%; Rabbit: 100%; Guinea pig: 100%; Dog: 93%; Bovine: 93%



[View online »](#)

**Product images:**

WB Suggested Anti-RP11-529I10.4 Antibody  
Titration: 0.2-1 ug/ml; ELISA Titer: 1: 62500;  
Positive Control: 721\_B cell lysate