

Product datasheet for **TA333818**

RAB11FIP5 Rabbit Polyclonal Antibody

Product data:

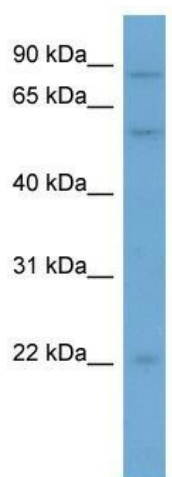
Product Type:	Primary Antibodies
Applications:	WB
Recommended Dilution:	WB
Reactivity:	Human
Host:	Rabbit
Isotype:	IgG
Clonality:	Polyclonal
Immunogen:	The immunogen for Anti-RAB11FIP5 Antibody: synthetic peptide directed towards the N terminal of human RAB11FIP5. Synthetic peptide located within the following region: MALVRGAEPAAGPSRWLPTHVQVTVLRARGLRGKSSGAGSTSDAYTVIQV
Formulation:	Liquid. Purified antibody supplied in 1x PBS buffer with 0.09% (w/v) sodium azide and 2% sucrose. <i>Note that this product is shipped as lyophilized powder to China customers.</i>
Purification:	Affinity Purified
Conjugation:	Unconjugated
Storage:	Store at -20°C as received.
Stability:	Stable for 12 months from date of receipt.
Predicted Protein Size:	70 kDa
Gene Name:	RAB11 family interacting protein 5
Database Link:	NP_056285 Entrez Gene 26056 Human Q9BXF6
Background:	RAB11FIP5 is a Rab effector involved in protein trafficking from apical recycling endosomes to the apical plasma membrane.
Synonyms:	GAF1; pp75; RIP11
Note:	Immunogen sequence homology: Dog: 100%; Pig: 100%; Rat: 100%; Human: 100%; Mouse: 100%; Bovine: 100%; Rabbit: 100%; Guinea pig: 93%



[View online »](#)

Protein Pathways: Endocytosis

Product images:



WB Suggested Anti-RAB11FIP5 Antibody Titration:
0.2-1 ug/ml; ELISA Titer: 1: 312500; Positive
Control: Hela cell lysate