

Product datasheet for **TA333816**

FAM98A Rabbit Polyclonal Antibody

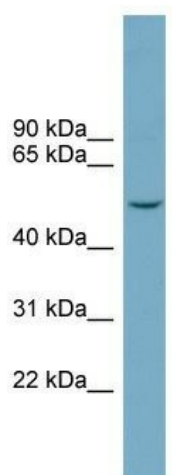
Product data:

Product Type:	Primary Antibodies
Applications:	WB
Recommended Dilution:	WB
Reactivity:	Human
Host:	Rabbit
Isotype:	IgG
Clonality:	Polyclonal
Immunogen:	The immunogen for Anti-FAM98A Antibody: synthetic peptide directed towards the middle region of human FAM98A. Synthetic peptide located within the following region: QKRQDGPQQQTGGRGGGRGGYEHSSYGGRGGHEQGGGRGGRGGYDHHGGRG
Formulation:	Liquid. Purified antibody supplied in 1x PBS buffer with 0.09% (w/v) sodium azide and 2% sucrose. <i>Note that this product is shipped as lyophilized powder to China customers.</i>
Purification:	Affinity Purified
Conjugation:	Unconjugated
Storage:	Store at -20°C as received.
Stability:	Stable for 12 months from date of receipt.
Predicted Protein Size:	55 kDa
Gene Name:	family with sequence similarity 98 member A
Database Link:	NP_056290 Entrez Gene 25940 Human Q8NCA5
Background:	FAM98A belongs to the FAM98 family. The function of FAM98A remains unknown.
Synonyms:	DKFZp564F0522; DKFZp686O03192
Note:	Immunogen sequence homology: Dog: 100%; Pig: 100%; Rat: 100%; Horse: 100%; Human: 100%; Mouse: 100%; Bovine: 100%; Rabbit: 100%; Guinea pig: 82%



[View online »](#)

Product images:



WB Suggested Anti-FAM98A Antibody Titration:
0.2-1 ug/ml; Positive Control: COLO205 cell lysate