

Product datasheet for **TA333814**

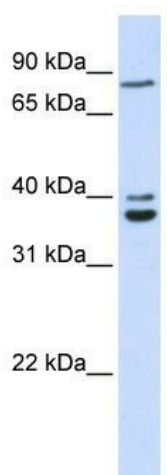
C18orf10 (TPGS2) Rabbit Polyclonal Antibody

Product data:

Product Type:	Primary Antibodies
Applications:	WB
Recommended Dilution:	WB
Reactivity:	Human
Host:	Rabbit
Isotype:	IgG
Clonality:	Polyclonal
Immunogen:	The immunogen for Anti-TPGS2 Antibody: synthetic peptide directed towards the middle region of human TPGS2. Synthetic peptide located within the following region: SMYSLPNAPTLDLEDDTHEASDDQPEKPHFDSRSVIFELDSCNGSGKVC
Formulation:	Liquid. Purified antibody supplied in 1x PBS buffer with 0.09% (w/v) sodium azide and 2% sucrose. <i>Note that this product is shipped as lyophilized powder to China customers.</i>
Purification:	Affinity Purified
Conjugation:	Unconjugated
Storage:	Store at -20°C as received.
Stability:	Stable for 12 months from date of receipt.
Predicted Protein Size:	33 kDa
Gene Name:	tubulin polyglutamylase complex subunit 2
Database Link:	NP_056291 Entrez Gene 25941 Human Q68CL5
Background:	The function of TPGS2 remains unknown.
Synonyms:	C18orf10; HMFN0601; L17; PGs2
Note:	Immunogen sequence homology: Dog: 100%; Pig: 100%; Rat: 100%; Horse: 100%; Human: 100%; Mouse: 100%; Bovine: 100%; Rabbit: 100%; Guinea pig: 93%; Zebrafish: 86%



[View online »](#)

Product images:

WB Suggested Anti-C18orf10 Antibody Titration: 0.2-1 ug/ml; ELISA Titer: 1: 62500; Positive Control: 293T cell lysateTPGS2 is strongly supported by BioGPS gene expression data to be expressed in Human HEK293T cells