

## Product datasheet for **TA333813**

### SH2B1 Rabbit Polyclonal Antibody

#### Product data:

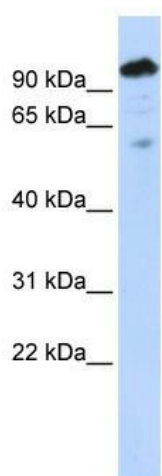
Product Type:	Primary Antibodies
Applications:	IHC, WB
Recommended Dilution:	WB, IHC
Reactivity:	Human
Host:	Rabbit
Isotype:	IgG
Clonality:	Polyclonal
Immunogen:	The immunogen for Anti-SH2B1 Antibody: synthetic peptide directed towards the middle region of human SH2B1. Synthetic peptide located within the following region: GTSFLTRENTDSLELSCLNHSESLPSQDLLLGPSESNDRLSQGAYGGLSD
Formulation:	Liquid. Purified antibody supplied in 1x PBS buffer with 0.09% (w/v) sodium azide and 2% sucrose. <i>Note that this product is shipped as lyophilized powder to China customers.</i>
Purification:	Affinity Purified
Conjugation:	Unconjugated
Storage:	Store at -20°C as received.
Stability:	Stable for 12 months from date of receipt.
Predicted Protein Size:	71 kDa
Gene Name:	SH2B adaptor protein 1
Database Link:	<a href="#">NP_056318</a> <a href="#">Entrez Gene 25970 Human Q9NRF2</a>
Background:	SH2B1 is a member of the SH2-domain containing mediators family. SH2B1 mediates activation of various kinases and may function in cytokine and growth factor receptor signaling and cellular transformation.
Synonyms:	PSM; SH2B
Note:	Immunogen sequence homology: Dog: 100%; Pig: 100%; Rat: 100%; Horse: 100%; Human: 100%; Mouse: 100%; Guinea pig: 100%; Bovine: 93%; Rabbit: 86%



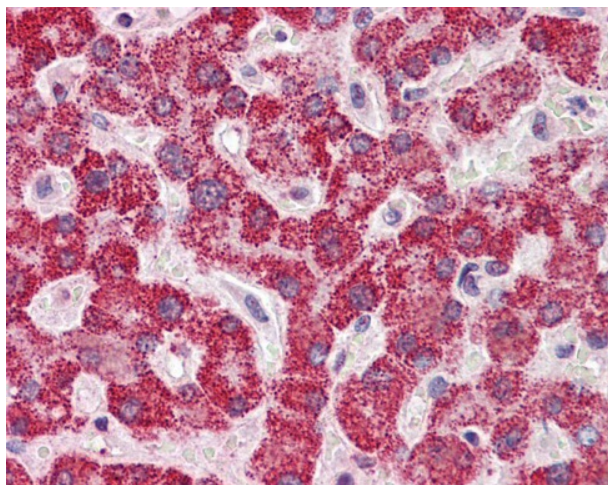
[View online »](#)

Protein Pathways: Neurotrophin signaling pathway

### Product images:



WB Suggested Anti-SH2B1 Antibody Titration: 0.2-1 ug/ml; ELISA Titer: 1: 312500; Positive Control: COLO205 cell lysate



Human Liver