

## Product datasheet for **TA333811**

### RPAP1 Rabbit Polyclonal Antibody

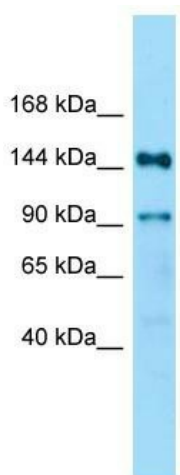
#### Product data:

Product Type:	Primary Antibodies
Applications:	WB
Recommended Dilution:	WB
Reactivity:	Human
Host:	Rabbit
Isotype:	IgG
Clonality:	Polyclonal
Immunogen:	The immunogen for Anti-RPAP1 Antibody is: synthetic peptide directed towards the N-terminal region of Human RPAP1. Synthetic peptide located within the following region: RNQGCQLPGSSHSFQGPLVTGKGLRDQEAQEQAQTIHEENIARLQAMAP
Formulation:	Liquid. Purified antibody supplied in 1x PBS buffer with 0.09% (w/v) sodium azide and 2% sucrose.
Purification:	Affinity Purified
Conjugation:	Unconjugated
Storage:	Store at -20°C as received.
Stability:	Stable for 12 months from date of receipt.
Predicted Protein Size:	144 kDa
Gene Name:	RNA polymerase II associated protein 1
Database Link:	<a href="#">NP_056355</a> <a href="#">Entrez Gene 26015 Human</a> <a href="#">Q9BWH6</a>
Background:	This protein forms part of the RNA polymerase II (RNAPII) enzyme complex and may recruit RNAPII to chromatin through its interaction with acetylated histones.
Synonyms:	DKFZp727M111; FLJ12732; KIAA1403; MGC858
Note:	Immunogen sequence homology: Human: 100%; Rabbit: 100%; Pig: 93%; Horse: 93%; Dog: 86%; Bovine: 86%; Guinea pig: 79%



[View online »](#)

## Product images:



Host: Rabbit  
Target Name: RPAP1  
Sample Tissue: Fetal Kidney Lysate  
Antibody Dilution: 1.0 $\mu$ g/ml

Host: Rabbit; Target Name: RPAP1; Sample  
Tissue: Fetal Kidney lysates; Antibody Dilution: 1.0  
ug/ml