

## Product datasheet for **TA333809**

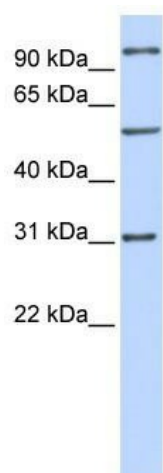
### RAI14 Rabbit Polyclonal Antibody

#### Product data:

Product Type:	Primary Antibodies
Applications:	WB
Recommended Dilution:	WB
Reactivity:	Human
Host:	Rabbit
Isotype:	IgG
Clonality:	Polyclonal
Immunogen:	The immunogen for Anti-RAI14 Antibody: synthetic peptide directed towards the middle region of human RAI14. Synthetic peptide located within the following region: LSQLYKEAQAELEDYRKRKSLVDVTAEYIHKAEHEKLMQLTNVSRKAED
Formulation:	Liquid. Purified antibody supplied in 1x PBS buffer with 0.09% (w/v) sodium azide and 2% sucrose.
Purification:	Affinity Purified
Conjugation:	Unconjugated
Storage:	Store at -20°C as received.
Stability:	Stable for 12 months from date of receipt.
Predicted Protein Size:	110 kDa
Gene Name:	retinoic acid induced 14
Database Link:	<a href="#">NP_056392</a> <a href="#">Entrez Gene 26064 Human</a> <a href="#">Q9P0K7</a>
Background:	RAI14 contains 7 ANK repeats. The function of RAI14 remains unknown.
Synonyms:	NORPEG; RAI13
Note:	Immunogen sequence homology: Dog: 100%; Pig: 100%; Rat: 100%; Horse: 100%; Human: 100%; Mouse: 100%; Bovine: 100%; Rabbit: 100%; Guinea pig: 100%



[View online »](#)

**Product images:**

WB Suggested Anti-RAI14 Antibody Titration: 0.2-1 ug/ml; ELISA Titer: 1: 62500; Positive Control: MCF7 cell lysate