

Product datasheet for **TA333806**

LSM14A Rabbit Polyclonal Antibody

Product data:

Product Type:	Primary Antibodies
Applications:	WB
Recommended Dilution:	WB
Reactivity:	Human
Host:	Rabbit
Isotype:	IgG
Clonality:	Polyclonal
Immunogen:	The immunogen for Anti-LSM14A Antibody: synthetic peptide directed towards the middle region of human LSM14A. Synthetic peptide located within the following region: TSGTETSNSGTLQPSSAVGSAFTQDTRSLKTQLSQGRSSPQLDPLRKSP
Formulation:	Liquid. Purified antibody supplied in 1x PBS buffer with 0.09% (w/v) sodium azide and 2% sucrose. <i>Note that this product is shipped as lyophilized powder to China customers.</i>
Purification:	Affinity Purified
Conjugation:	Unconjugated
Storage:	Store at -20°C as received.
Stability:	Stable for 12 months from date of receipt.
Predicted Protein Size:	50 kDa
Gene Name:	LSM14A mRNA processing body assembly factor
Database Link:	NP_056393 Entrez Gene 26065 Human Q8ND56



[View online »](#)

Background:

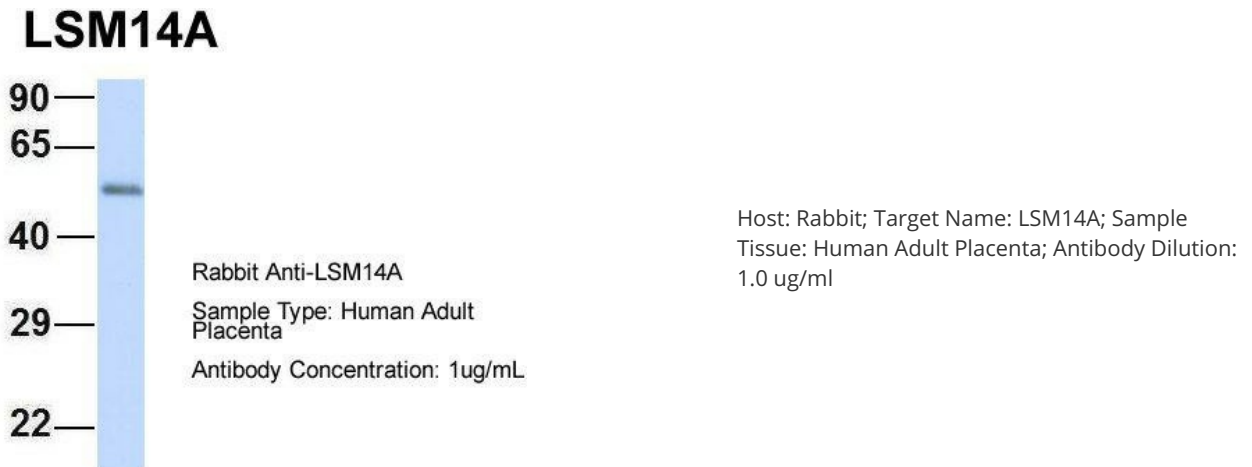
Sm-like proteins were identified in a variety of organisms based on sequence homology with the Sm protein family. Sm-like proteins contain the Sm sequence motif, which consists of 2 regions separated by a linker of variable length that folds as a loop. The Sm-like proteins are thought to form a stable heteromer present in tri-snRNP particles, which are important for pre-mRNA splicing. Sm-like proteins were identified in a variety of organisms based on sequence homology with the Sm protein family (see SNRPD2; 601061). Sm-like proteins contain the Sm sequence motif, which consists of 2 regions separated by a linker of variable length that folds as a loop. The Sm-like proteins are thought to form a stable heteromer present in tri-snRNP particles, which are important for pre-mRNA splicing. [supplied by OMIM]

Synonyms:

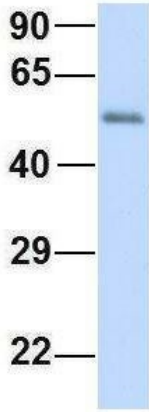
C19orf13; FAM61A; RAP55; RAP55A

Note:

Immunogen sequence homology: Dog: 100%; Pig: 100%; Rat: 100%; Human: 100%; Mouse: 100%; Bovine: 100%; Rabbit: 100%; Horse: 93%; Guinea pig: 93%

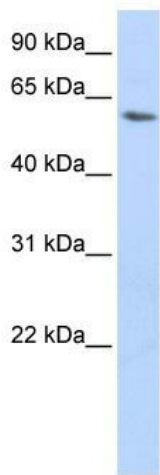
Product images:


LSM14A



Rabbit Anti-LSM14A
Sample Type: Human Fetal Lung
Antibody Concentration: 1ug/mL

Host: Rabbit; Target Name: LSM14A; Sample
Tissue: Human Fetal Lung; Antibody Dilution: 1.0
ug/ml



WB Suggested Anti-LSM14A Antibody Titration:
0.2-1 ug/ml; ELISA Titer: 1: 62500; Positive
Control: HepG2 cell lysate LSM14A is strongly
supported by BioGPS gene expression data to be
expressed in Human HepG2 cells