

Product datasheet for **TA333805**

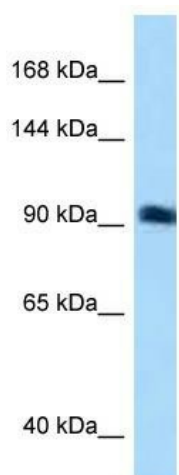
SGEF (ARHGEF26) Rabbit Polyclonal Antibody

Product data:

Product Type:	Primary Antibodies
Applications:	WB
Recommended Dilution:	WB
Reactivity:	Human
Host:	Rabbit
Isotype:	IgG
Clonality:	Polyclonal
Immunogen:	The immunogen for Anti-ARHGEF26 Antibody: synthetic peptide directed towards the N terminal of human SGEF. Synthetic peptide located within the following region: MDGESEVDFSSNSITPLWRRRSIPQPHQVLGRSKPRPQSYQSPNGLLITD
Formulation:	Liquid. Purified antibody supplied in 1x PBS buffer with 0.09% (w/v) sodium azide and 2% sucrose.
Purification:	Affinity Purified
Conjugation:	Unconjugated
Storage:	Store at -20°C as received.
Stability:	Stable for 12 months from date of receipt.
Predicted Protein Size:	97 kDa
Gene Name:	Rho guanine nucleotide exchange factor 26
Database Link:	NP_056410 Entrez Gene 26084 Human Q96DR7
Background:	SGEF activates RhoG GTPase by promoting the exchange of GDP by GTP. SGEF is required for the formation of membrane ruffles during macropinocytosis. SGEF is also required for the formation of cup-like structures during trans-endothelial migration of leukocyte.
Synonyms:	CSGEF; HMFN1864; SGEF
Note:	Immunogen sequence homology: Pig: 100%; Rat: 100%; Human: 100%; Mouse: 100%; Bovine: 100%; Rabbit: 100%; Yeast: 90%



[View online »](#)

Product images:

WB Suggested Anti-ARHGEF26 Antibody Titration:
0.2-1 ug/ml; ELISA Titer: 1: 12500; Positive
Control: OVCAR-3 cell lysate