

## Product datasheet for **TA333804**

### Kallikrein 13 (KLK13) Rabbit Polyclonal Antibody

#### Product data:

Product Type:	Primary Antibodies
Applications:	WB
Recommended Dilution:	WB
Reactivity:	Human
Host:	Rabbit
Isotype:	IgG
Clonality:	Polyclonal
Immunogen:	The immunogen for Anti-KLK13 Antibody: synthetic peptide directed towards the middle region of human KLK13. Synthetic peptide located within the following region: VLTAAHCLKEGLKVYLGKHALGRVEAGEQVREVVHSIPHPEYRRSPHTLN
Formulation:	Liquid. Purified antibody supplied in 1x PBS buffer with 0.09% (w/v) sodium azide and 2% sucrose. <i>Note that this product is shipped as lyophilized powder to China customers.</i>
Purification:	Affinity Purified
Conjugation:	Unconjugated
Storage:	Store at -20°C as received.
Stability:	Stable for 12 months from date of receipt.
Predicted Protein Size:	29 kDa
Gene Name:	kallikrein related peptidase 13
Database Link:	<a href="#">NP_056411</a> <a href="#">Entrez Gene 26085 Human</a> <a href="#">Q9UKR3</a>



[View online »](#)

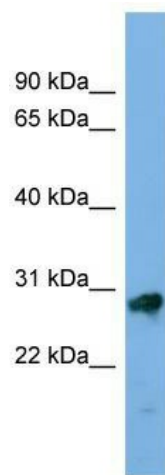
**Background:** Kallikreins are a subgroup of serine proteases having diverse physiological functions. Growing evidence suggests that many kallikreins are implicated in carcinogenesis and some have potential as novel cancer and other disease biomarkers. This gene is one of the fifteen kallikrein subfamily members located in a cluster on chromosome 19. Expression of this gene is regulated by steroid hormones and may be useful as a marker for breast cancer. An additional transcript variant has been identified, but its full length sequence has not been determined.

**Synonyms:** KLK-L4; KLKL4

**Note:** Immunogen sequence homology: Human: 100%; Rat: 86%; Rabbit: 86%; Dog: 79%; Horse: 79%; Mouse: 79%; Bovine: 79%

**Protein Families:** Druggable Genome, Secreted Protein

### Product images:



WB Suggested Anti-KLK13 Antibody Titration: 0.2-1 ug/ml; ELISA Titer: 1: 62500; Positive Control: PANC1 cell lysate