

Product datasheet for **TA333801**

C1orf144 Rabbit Polyclonal Antibody

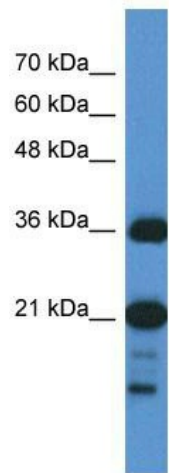
Product data:

Product Type:	Primary Antibodies
Applications:	IF, WB
Recommended Dilution:	WB
Reactivity:	Human
Host:	Rabbit
Isotype:	IgG
Clonality:	Polyclonal
Immunogen:	The immunogen for Anti-SZRD1 Antibody: synthetic peptide directed towards the N terminal of human SZRD1. Synthetic peptide located within the following region: MRRSLRAGKRRQTAGRKSKSPPKVPIMIQDDSLPAGPPPQIRILKRPTSN
Formulation:	Liquid. Purified antibody supplied in 1x PBS buffer with 0.09% (w/v) sodium azide and 2% sucrose. <i>Note that this product is shipped as lyophilized powder to China customers.</i>
Purification:	Affinity Purified
Conjugation:	Unconjugated
Storage:	Store at -20°C as received.
Stability:	Stable for 12 months from date of receipt.
Predicted Protein Size:	15 kDa
Database Link:	NP_056424 Entrez Gene 26099 Human
Background:	The function of this protein remains unknown.
Synonyms:	C1orf144
Note:	Immunogen sequence homology: Rat: 100%; Human: 100%; Mouse: 100%; Bovine: 93%; Rabbit: 93%

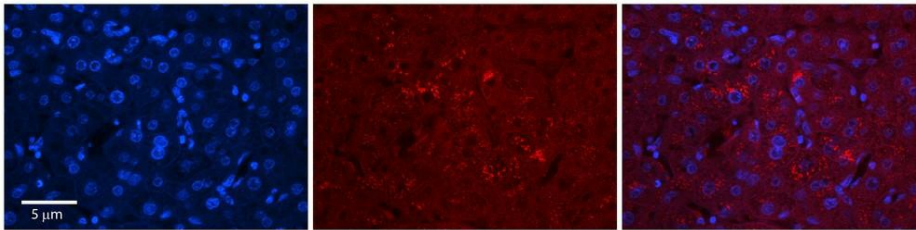


[View online »](#)

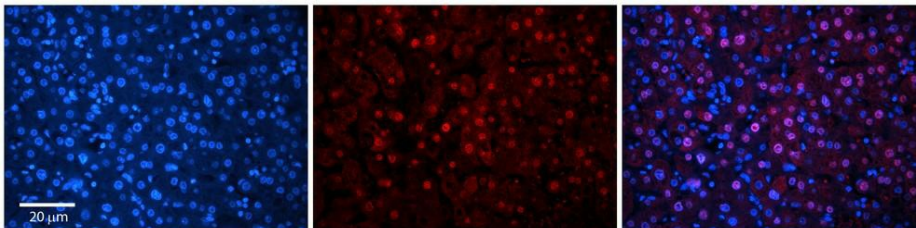
Product images:



WB Suggested Anti-C1orf144 Antibody Titration: 0.2-1 ug/ml; ELISA Titer: 1: 62500; Positive Control: RPMI 8226 cell lysateSZRD1 is supported by BioGPS gene expression data to be expressed in RPMI 8226



Rabbit Anti-C1orf144 Antibody; Formalin Fixed Paraffin Embedded Tissue: Human Adult Liver; Observed Staining: Cytoplasm in hepatocytes, moderate signal, moderate tissue distribution; Primary Antibody Concentration: 1: 100; Secondary Antibody: Donkey anti-



Rabbit Anti-C1orf144 Antibody; Formalin Fixed Paraffin Embedded Tissue: Human Adult Liver; Observed Staining: Nuclear (strong) and Cytoplasm (weak) in hepatocytes, moderate signal, wide tissue distribution; Primary Antibody Concentration: 1: 100; Secondary Antibody: Donkey anti-