

Product datasheet for **TA333800**

CCDC69 Rabbit Polyclonal Antibody

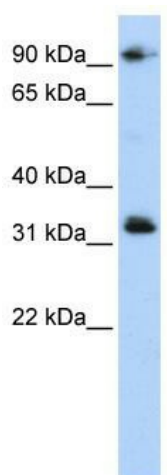
Product data:

Product Type:	Primary Antibodies
Applications:	WB
Recommended Dilution:	WB
Reactivity:	Human
Host:	Rabbit
Isotype:	IgG
Clonality:	Polyclonal
Immunogen:	The immunogen for Anti-CCDC69 Antibody: synthetic peptide directed towards the middle region of human CCDC69. Synthetic peptide located within the following region: TREALEKEVQLRRQLQQEKEELLYRVLGANASPAFPLAPVTPTEVSFLAT
Formulation:	Liquid. Purified antibody supplied in 1x PBS buffer with 0.09% (w/v) sodium azide and 2% sucrose.
Purification:	Affinity Purified
Conjugation:	Unconjugated
Storage:	Store at -20°C as received.
Stability:	Stable for 12 months from date of receipt.
Predicted Protein Size:	35 kDa
Gene Name:	coiled-coil domain containing 69
Database Link:	NP_056436 Entrez Gene 26112 Human A6NI79
Background:	The function of CCDC69 remains unknown.
Synonyms:	DKFZp434C171; FLJ13705
Note:	Immunogen sequence homology: Human: 100%; Dog: 93%; Pig: 93%; Horse: 93%; Rat: 90%; Bovine: 86%; Guinea pig: 79%



[View online »](#)

Product images:



WB Suggested Anti-CCDC69 Antibody Titration:
0.2-1 ug/ml; ELISA Titer: 1: 1562500; Positive
Control: 293T cell lysate