

Product datasheet for **TA333798**

IRF2BP1 Rabbit Polyclonal Antibody

Product data:

Product Type:	Primary Antibodies
Applications:	WB
Recommended Dilution:	WB
Reactivity:	Human
Host:	Rabbit
Isotype:	IgG
Clonality:	Polyclonal
Immunogen:	The immunogen for Anti-IRF2BP1 Antibody: synthetic peptide directed towards the middle region of human IRF2BP1. Synthetic peptide located within the following region: LVARNGEAEVSPTAGAEAVSGGGSGTGATPGAPLCCTLCRERLEDTHFVQ
Formulation:	Liquid. Purified antibody supplied in 1x PBS buffer with 0.09% (w/v) sodium azide and 2% sucrose. <i>Note that this product is shipped as lyophilized powder to China customers.</i>
Purification:	Affinity Purified
Conjugation:	Unconjugated
Storage:	Store at -20°C as received.
Stability:	Stable for 12 months from date of receipt.
Predicted Protein Size:	62 kDa
Gene Name:	interferon regulatory factor 2 binding protein 1
Database Link:	NP_056464 Entrez Gene 26145 Human Q8IU81
Background:	IRF2BP1 acts as a transcriptional repressor. IRF2BP1 also acts as a transcriptional corepressor in a IRF2-dependent manner. This repression is not mediated at least in part by histone deacetylase activities.
Synonyms:	DKFZp434M154
Note:	Immunogen sequence homology: Dog: 100%; Pig: 100%; Rat: 100%; Horse: 100%; Human: 100%; Mouse: 100%; Bovine: 100%; Rabbit: 100%; Guinea pig: 100%



[View online »](#)

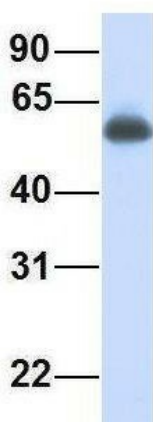
Protein Families: Druggable Genome

Product images:



WB Suggested Anti-IRF2BP1 Antibody Titration:
0.2-1 ug/ml; ELISA Titer: 1: 62500; Positive
Control: Human Placenta

IRF2BP1



Rabbit Anti-IRF2BP1
Sample Type: Human Fetal Lung
Antibody Concentration: 1ug/mL

Host: Rabbit; Target Name: IRF2BP1; Sample
Tissue: Human Fetal Lung; Antibody Dilution: 1.0
ug/ml