

Product datasheet for **TA333797**

C10orf12 Rabbit Polyclonal Antibody

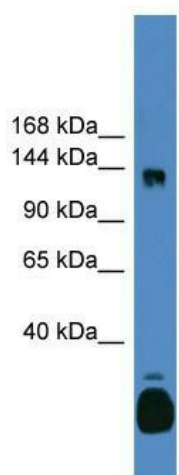
Product data:

Product Type:	Primary Antibodies
Applications:	WB
Recommended Dilution:	WB
Reactivity:	Human
Host:	Rabbit
Isotype:	IgG
Clonality:	Polyclonal
Immunogen:	The immunogen for Anti-C10orf12 Antibody: synthetic peptide directed towards the C terminal of human C10orf12. Synthetic peptide located within the following region: GESSSRPQKATNRKQSSGKTRARPSTKTPESSAAQRKRKLKAKLDCSHSK
Formulation:	Liquid. Purified antibody supplied in 1x PBS buffer with 0.09% (w/v) sodium azide and 2% sucrose. <i>Note that this product is shipped as lyophilized powder to China customers.</i>
Purification:	Affinity Purified
Conjugation:	Unconjugated
Storage:	Store at -20°C as received.
Stability:	Stable for 12 months from date of receipt.
Predicted Protein Size:	137 kDa
Gene Name:	chromosome 10 open reading frame 12
Database Link:	NP_056467 Entrez Gene 26148 Human
Background:	The function of C10orf12 remains unknown.
Synonyms:	DKFZp564P1916; FLJ13022
Note:	Immunogen sequence homology: Pig: 100%; Human: 100%; Bovine: 100%; Dog: 93%; Horse: 93%; Rabbit: 93%; Guinea pig: 92%; Rat: 86%



[View online »](#)

Product images:



WB Suggested Anti-C10orf12 Antibody Titration:
0.2-1 ug/ml; ELISA Titer: 1: 1562500; Positive
Control: Human kidney