

Product datasheet for **TA333795**

RGS22 Rabbit Polyclonal Antibody

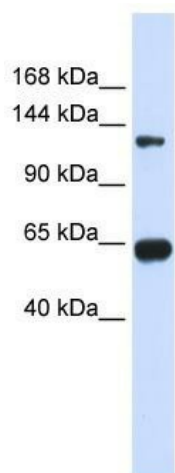
Product data:

| | |
|-------------------------|---|
| Product Type: | Primary Antibodies |
| Applications: | WB |
| Recommended Dilution: | WB |
| Reactivity: | Human |
| Host: | Rabbit |
| Isotype: | IgG |
| Clonality: | Polyclonal |
| Immunogen: | The immunogen for Anti-RGS22 Antibody: synthetic peptide directed towards the N terminal of human RGS22. Synthetic peptide located within the following region: QTVSTFSLPCCVPYNKLSPAISSVSENFIFDDGVHPRTKKDPSKTNKLI |
| Formulation: | Liquid. Purified antibody supplied in 1x PBS buffer with 0.09% (w/v) sodium azide and 2% sucrose. <i>Note that this product is shipped as lyophilized powder to China customers.</i> |
| Purification: | Affinity Purified |
| Conjugation: | Unconjugated |
| Storage: | Store at -20°C as received. |
| Stability: | Stable for 12 months from date of receipt. |
| Predicted Protein Size: | 147 kDa |
| Gene Name: | regulator of G-protein signaling 22 |
| Database Link: | NP_056483 Entrez Gene 26166 Human Q8NE09 |
| Background: | RGS22 inhibits signal transduction by increasing the GTPase activity of G protein alpha subunits thereby driving them into their inactive GDP-bound form. |
| Synonyms: | CT145; PRTD-NY2 |
| Note: | Immunogen sequence homology: Human: 100%; Bovine: 100%; Horse: 93%; Rat: 85%; Pig: 79% |



[View online »](#)

Product images:



WB Suggested Anti-RGS22 Antibody Titration: 0.2-1 ug/ml; ELISA Titer: 1: 312500; Positive Control: Transfected 293T