

Product datasheet for **TA333794**

SEN3 Rabbit Polyclonal Antibody

Product data:

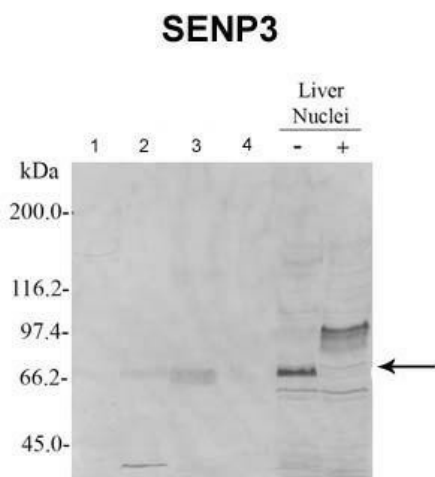
Product Type:	Primary Antibodies
Applications:	IF, WB
Recommended Dilution:	IF, WB
Reactivity:	Rat, Human
Host:	Rabbit
Isotype:	IgG
Clonality:	Polyclonal
Immunogen:	The immunogen for Anti-SEN3 Antibody: synthetic peptide directed towards the N terminal of human SEN3. Synthetic peptide located within the following region: PPPKPRLKSGGGFGPDPGSGTTVPARRLPVPRPSFDASASEEEEEEEEE
Formulation:	Liquid. Purified antibody supplied in 1x PBS buffer with 0.09% (w/v) sodium azide and 2% sucrose. <i>Note that this product is shipped as lyophilized powder to China customers.</i>
Purification:	Affinity Purified
Conjugation:	Unconjugated
Storage:	Store at -20°C as received.
Stability:	Stable for 12 months from date of receipt.
Predicted Protein Size:	65 kDa
Gene Name:	SUMO1/sentrin/SMT3 specific peptidase 3
Database Link:	NP_056485 Entrez Gene 303245 RatEntrez Gene 26168 Human Q9H4L4
Background:	SEN3 is a protease that releases SUMO2 and SUMO3 monomers from sumoylated substrates, but has only weak activity against SUMO1 conjugates. SEN3 deconjugates SUMO2 from MEF2D, which increases its transcriptional activation capability.
Synonyms:	SMT3IP1; SSP3; Ulp1
Note:	Immunogen sequence homology: Dog: 100%; Pig: 100%; Rat: 100%; Horse: 100%; Human: 100%; Mouse: 100%; Bovine: 100%; Rabbit: 100%; Guinea pig: 100%



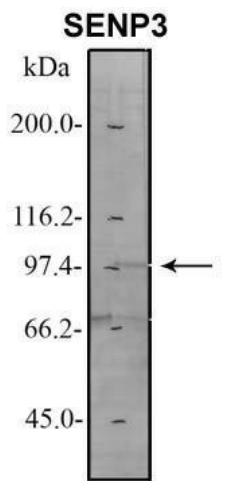
[View online »](#)

Protein Families: Druggable Genome, Protease

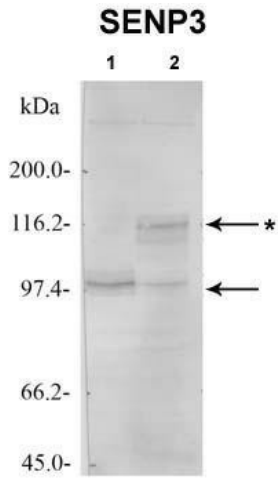
Product images:



Sample Type: 1. Rat Liver cells (200ug); 2. Rat Brain cells (200ug); 3. Rat Testis cells (200ug); 4. Rat Kidney cells (200ug); Primary Dilution: 1: 1000; Secondary Antibody: alkaline phosphatase-conjugated anti-rabbit; Secondary Dilution: 1: 1000; Image S



Sample Type: 1. HeLa cell extract (200ug) Primary Dilution: 1: 1000 Secondary Antibody: alkaline phosphatase-conjugated anti-rabbit Secondary Dilution: 1: 1000 Image Submitted by: Andreia Carvalho BMC-OBF, Portugal. SENP3 is strongly supported by BioGPS gene e



Sample Type: 1. HeLa cell extract (200ug)2. HeLa cell extract (200ug) incubated with HA-SUMO2-VME*HA-S2-VME-SENP3
 Primary Dilution: 1: 1000
 Secondary Antibody: alkaline phosphatase-conjugated anti-rabbit
 Secondary Dilution: 1: 1000
 Image Submitted by: Andreia



WB Suggested Anti-SENP3 Antibody Titration: 0.2-1 ug/ml; ELISA Titer: 1: 1562500; Positive Control: 721_B cell lysate
 SENP3 is strongly supported by BioGPS gene expression data to be expressed in Human 721_B cells