

Product datasheet for **TA333793**

Syntenin 2 (SDCBP2) Rabbit Polyclonal Antibody

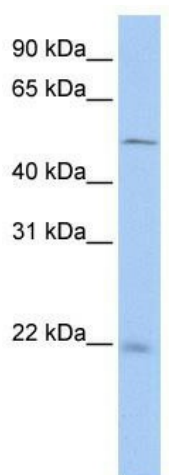
Product data:

Product Type:	Primary Antibodies
Applications:	WB
Recommended Dilution:	WB
Reactivity:	Human
Host:	Rabbit
Isotype:	IgG
Clonality:	Polyclonal
Immunogen:	The immunogen for Anti-SDCBP2 Antibody: synthetic peptide directed towards the N terminal of human SDCBP2. Synthetic peptide located within the following region: VAPVTGYSLGVRRAEIKPGVREIHLCKDERGKTGLRLRKVDQGLFVQLVQ
Formulation:	Liquid. Purified antibody supplied in 1x PBS buffer with 0.09% (w/v) sodium azide and 2% sucrose. <i>Note that this product is shipped as lyophilized powder to China customers.</i>
Purification:	Affinity Purified
Conjugation:	Unconjugated
Storage:	Store at -20°C as received.
Stability:	Stable for 12 months from date of receipt.
Predicted Protein Size:	23 kDa
Gene Name:	syndecan binding protein 2
Database Link:	NP_056500 Entrez Gene 27111 Human Q9H190
Background:	SDCBP2 contains 2 PDZ (DHR) domains. The function of SDCBP2 remains unknown.
Synonyms:	SITAC; SITAC18; ST-2
Note:	Immunogen sequence homology: Rat: 100%; Human: 100%; Rabbit: 100%; Dog: 92%; Pig: 92%; Horse: 92%; Guinea pig: 92%; Bovine: 85%



[View online »](#)

Product images:



WB Suggested Anti-SDCBP2 Antibody Titration:
0.2-1 ug/ml; ELISA Titer: 1: 62500; Positive
Control: Hela cell lysate