

## Product datasheet for **TA333792**

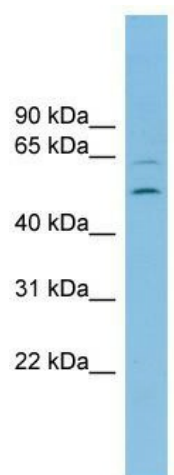
### ERLEC1 Rabbit Polyclonal Antibody

#### Product data:

Product Type:	Primary Antibodies
Applications:	WB
Recommended Dilution:	WB
Reactivity:	Human
Host:	Rabbit
Isotype:	IgG
Clonality:	Polyclonal
Immunogen:	The immunogen for Anti-ERLEC1 Antibody: synthetic peptide directed towards the middle region of human C2orf30. Synthetic peptide located within the following region: GKHHVHQYHEDKDSGKTSVVVGTWNQEEHIEWAKKNTARAYHLQDDGTQTV
Formulation:	Liquid. Purified antibody supplied in 1x PBS buffer with 0.09% (w/v) sodium azide and 2% sucrose. <i>Note that this product is shipped as lyophilized powder to China customers.</i>
Purification:	Affinity Purified
Conjugation:	Unconjugated
Storage:	Store at -20°C as received.
Stability:	Stable for 12 months from date of receipt.
Predicted Protein Size:	55 kDa
Gene Name:	endoplasmic reticulum lectin 1
Database Link:	<a href="#">NP_056516</a> <a href="#">Entrez Gene 27248 Human Q96DZ1</a>
Background:	The function of this protein remains unknown.
Synonyms:	C2orf30; CIM; CL24936; CL25084; HEL117; XTP3-B; XTP3TPB
Note:	Immunogen sequence homology: Pig: 100%; Rat: 100%; Horse: 100%; Human: 100%; Mouse: 100%; Bovine: 100%; Rabbit: 100%; Dog: 93%; Guinea pig: 93%
Protein Families:	Secreted Protein



[View online »](#)

**Product images:**

WB Suggested Anti-C2orf30 Antibody Titration:  
0.2-1 ug/ml; ELISA Titer: 1: 62500; Positive  
Control: THP-1 cell lysate