

Product datasheet for **TA333786**

SLC25A39 Rabbit Polyclonal Antibody

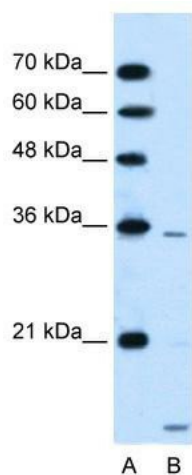
Product data:

Product Type:	Primary Antibodies
Applications:	IHC, WB
Recommended Dilution:	WB, IHC
Reactivity:	Human
Host:	Rabbit
Isotype:	IgG
Clonality:	Polyclonal
Immunogen:	The immunogen for Anti-SLC25A39 Antibody: synthetic peptide directed towards the C terminal of human SLC25A39. Synthetic peptide located within the following region: RVNPLHVDSTWLLLRRIRAESGKGLFAGFLPRIIKAAPSCAIMISTYEF
Formulation:	Liquid. Purified antibody supplied in 1x PBS buffer with 0.09% (w/v) sodium azide and 2% sucrose.
Purification:	Affinity Purified
Conjugation:	Unconjugated
Storage:	Store at -20°C as received.
Stability:	Stable for 12 months from date of receipt.
Predicted Protein Size:	39 kDa
Gene Name:	solute carrier family 25 member 39
Database Link:	NP_057100 Entrez Gene 51629 Human Q9BZJ4
Background:	SLC25A39 is a member of the solute carrier family 25 and is known to transport molecules over the mitochondrial membrane.
Synonyms:	CGI-69; CGI69
Note:	Immunogen sequence homology: Dog: 100%; Pig: 100%; Rat: 100%; Horse: 100%; Human: 100%; Mouse: 100%; Bovine: 100%; Rabbit: 100%; Guinea pig: 100%; Zebrafish: 85%
Protein Families:	Transmembrane

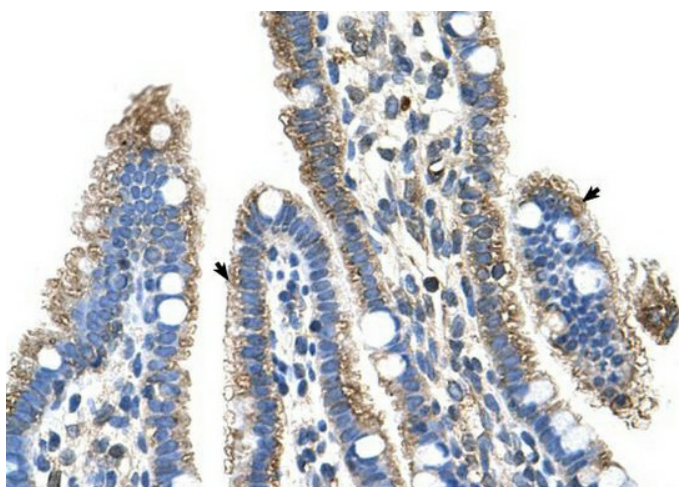


[View online »](#)

Product images:



WB Suggested Anti-SLC25A39 Antibody Titration:
0.2-1 ug/ml; Positive Control: HepG2 cell lysate



Human Intestine